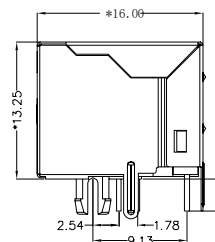
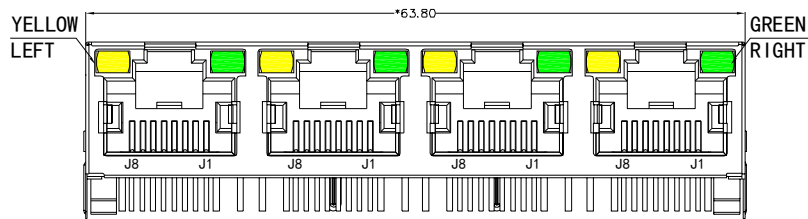


REACH & RoHS COMPLIANT



MATERIAL:

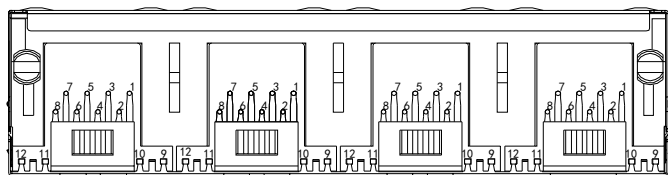
HOUSING: PBT,UL94V-0,BLACK.
 TERMINAL: PHOSPHOR BRONZE $\phi=0.46\text{MM}$, G/FU" GOLD PLATING.
 SHIELD: C2680,T=0.20MM,20 MIN NICKEL PLATING ON ALL AREA.

MACHANICAL:

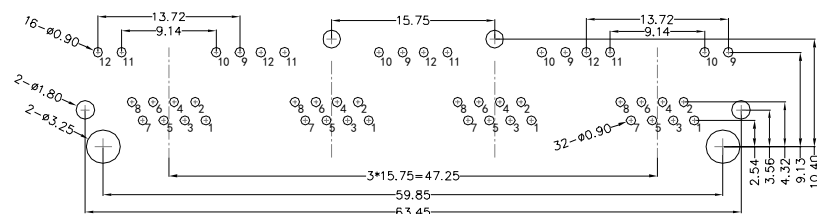
DURABILITY: 750 CYCLES MIN,12.5MM/MINUTE.
 INSERTION FORCE: 2.2KG.F MAX.
 RETENTION STRENGTH : 7.7KG.F BETWEEN JACK AND PLUG.
 OPERATING TEMPERATURE: $-40^{\circ}\text{C}\sim+85^{\circ}\text{C}$.
 STORAGE TEMPERATURE: $-40^{\circ}\text{C}\sim+85^{\circ}\text{C}$.
 ALL CRITICAL DIMENSIONS WITH "MM"

ELECTRICAL:

VOLTAGE: 125 VOLTS AC.
 CURRENT RATING : 1.5AMP.
 DIELECTRIC STRENGTH: 1000 VAC RMS 50HZ OR 60HZ,1MIN.
 INSULATION RESISTANCE: 500 MEGA OHMS MIN. INITIAL AFTER 500V DC FOR 1 MINUTE.
 CONTACT RESISTANCE: SINGLE TERMINAL 30 MILLIOHMS MAX. INITIAL 50 MILLIOHMS MAX. AFTER DURABILITY TEST.



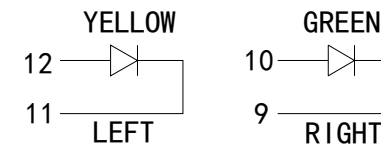
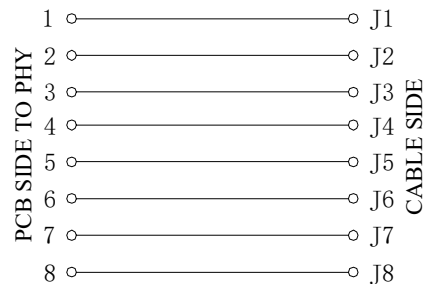
BOTTOM VIEW



RECOMMENDED PCB LAYOUT VIEWED FROM COMPONENT SIDE

LED Specification

Standard LED Color	LED Wavelength	Foward(A)	Foward(V)
Green	569nm	20mA	1.6-2.6V
Yellow	589nm	20mA	1.6-2.6V



VOOHU 苏州沃虎电子科技有限公司
 Su Zhou Voohu Electronic Tech.Co.Ltd

TITLE:
 RJ45直通 56带屏蔽带灯

SIZE
 A4

UNITS
 MM[INCH]

GENERAL TOLERANCES
 UNLESS SPECIFIED

APPROVED BY:
 Geoffrey.Song

PART NO.:
 SYT561488AB1A1D9Y1027

SACLE
 1:1

REV
 A0

$x\pm 0.35$ $x^{\circ}\pm 3.0^{\circ}$
 $.x\pm 0.30$ $.x^{\circ}\pm 2.0^{\circ}$

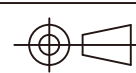
CHECKED BY:
 Elvis.Song

TEL: +86 400 1048 018

WEB: WWW.WOHU-TEK.COM

REMARK:

SHEET
 1/1



$.xx\pm 0.25$ $.xx^{\circ}\pm 1.5^{\circ}$
 $.xxx\pm 0.10$ $.xxx^{\circ}\pm 1.0^{\circ}$

DESIGND BY:
 Sunny.Xu