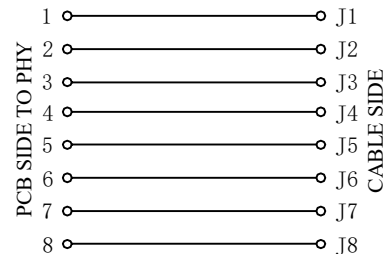
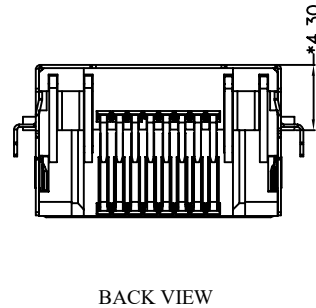
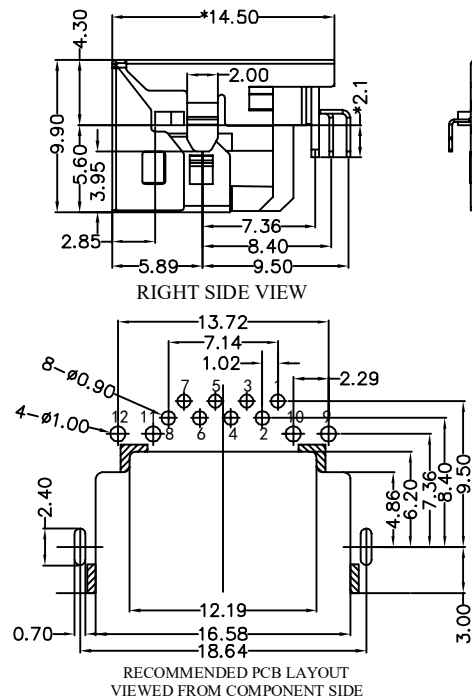
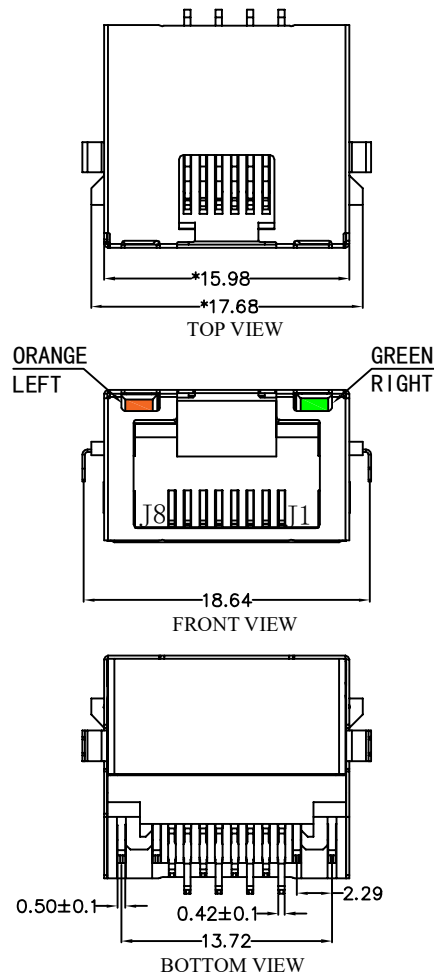
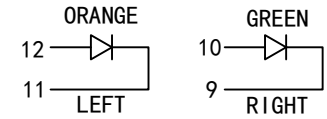


REACH & RoHS COMPLIANT



LED Specification

Standard LED Color	LED Wavelength	Foward(A)	Foward(V)
Green	568nm	20mA	1.85-2.45V
Orange	605nm	20mA	1.7-2.2V



MATERIAL:
 HOUSING: LCP,UL94V-0,BLACK.
 TERMINAL: PHOSPHOR BRONZE T=0.25MM,
 G/FU" GOLD PLATING ON CONTACT AREA.
 SHIELD: C2680,T=0.20MM,20 MIN NICKEL PLATING
 ON ALL AREA.

MACHANICAL:
 DURABILITY: 750 CYCLES MIN,12.5MM/MINUTE.
 INSERTION FORCE: 2.2KG.F MAX.
 RETENTION STRENGTH : 7.7KG.F BETWEEN JACK AND PLUG.
 OPERATING TEMPERATURE: -40°C~+85°C.
 STORAGE TEMPERATURE: -40°C~+85°C.
 ALL CRITICAL DIMENSIONS WITH "*"

ELECTRICAL:
 VOLTAGE: 125 VOLTS AC.
 CURRENT RATING : 1.5AMP.
 DIELECTRIC STRENGTH: 1000 VAC RMS 50HZ OR 60HZ,1MIN.
 INSULATION RESISTANCE: 500 MEGA OHMS MIN. INITIAL
 AFTER 500V DC FOR 1 MINUTE.
 CONTACT RESISTANCE: SINGLE TERMINAL 30 MILLIOHMS MAX.
 INITIAL 50 MILLIOHMS MAX. AFTER
 DURABILITY TEST.

VOOHU 苏州沃虎电子科技有限公司
 Su Zhou Voohu Electronic Tech.Co.Ltd

TITLE:
 RJ45 沉板4. 3DIP

PART NO.:
 SYTDCB431188AB7WA6DB1075

SIZE
 A4

UNITS
 MM[INCH]

SACLE
 1:1

REV
 A0

SHEET
 1/1

GENERAL TOLERANCES
 UNLESS SPECIFIED

x±0.35	x°±3.0°
.x±0.30	.x°±2.0°
.xx±0.25	.xx°±1.5°
.xxx±0.10	.xxx°±1.0°

APPROVED BY:
 Geoffrey.Song

CHECKED BY:
 Elvis.Song

DESIGND BY:
 Sunny.Xu

TEL: +86 400 1048 018

WEB: WWW.WOHU-TEK.COM

REMARK:

