

# Specification for Approval

## 产品承认书

Customer:

Customer P/N:

VOOHU P/N:

WHDG30102G

Version No.:

V0.1

Description:

100/1000 BASE-T

Laser Marking

SUZHOU VOOHU Company Approval		Customer Approval (客户承认签章)
<b>DRAWN</b>	Geoffrey.Song	
<b>CHECKED</b>	Sunny.Xu	
<b>APPROVED</b>	Elvis. Song	
日期DATE::2024/7/13		日期DATE:

Please Return One Copy to Us After Approved,TKS! (承认后请回寄一份,谢谢)

**VOOHU 沃虎**

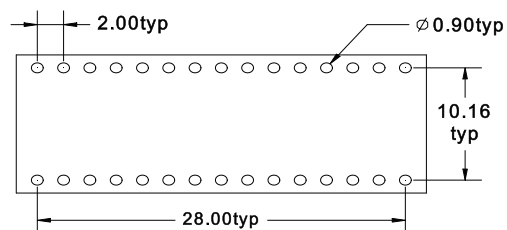
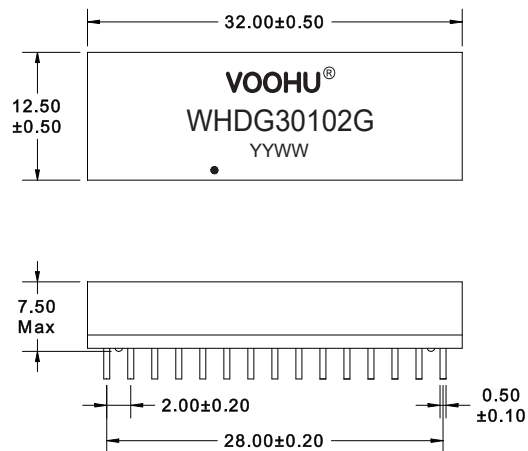
—— 连接世界 · 通信未来 ——

苏州沃虎电子科技有限公司  
SuZhou Voohu Electronic Tech.Co.,Ltd

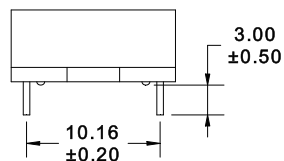
地址：江苏省苏州市吴江区阿尔法大厦A栋  
ADD: Building A, Alpha Building, Wujiang District,  
Suzhou City, Jiangsu Province

TEL: +86 400 1048 018 WEB: www.wohu-tek.com/  
+86 13338655578 E-MAIL: wohu@wohu-tek.com

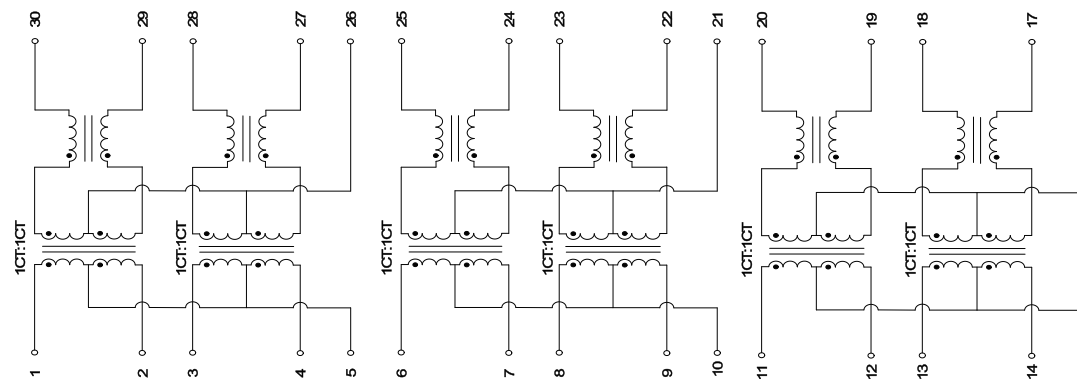
### A. MECHANICAL(unit:mm)



Suggested PAD layout



### B. Schematics



### C. ELECTRICAL SPECIFICATIONS @25°C

Unless Otherwise Specified, Testing is Performed at 25°C ± 5°C

- OCL: 350uH Min @ 100 KHz, 0.1V with 8mA DC BIAS
- Leakage Inductance: 0.5uH Max @ 100KHz, 0.1V
- DCR: 1400mΩ Max
- Turns Ratio: 1CT:1CT±5%
- Insertion Loss: -1.1 dB Max @ 1-100 MHz
- Return Loss: -18 dB Min @ 1-30 MHz  
-14.4 dB Min @ 40 MHz  
-13.1 dB Min @ 50 MHz  
-12 dB Min @ 60-80 MHz  
-10 dB Min @ 100 MHz
- Cross Talk: -30 dB Min @ 1-100 MHz
- Common Mode Rejection: -30 dB Min @ 1-100 MHz
- Isolation Hipot: 1500VAC 1mA 60S
- Operating temperature 0°C to +70°C
- Storage temperature -40°C to +85°C

**VOOHU** 苏州沃虎电子科技有限公司  
Su Zhou Voohu Electronic Tech.Co.Ltd

TITLE:  
100/1000 BASE-T

SIZE  
A4

UNITS  
MM[INCH]

GENERAL TOLERANCES  
UNLESS SPECIFIED

APPROVED BY:  
Geoffrey.Song

PART NO.:  
WHDG30102G

SACLE  
1:1

REV  
A0

x±0.35  
.x±0.30

x°±3.0°  
.x°±2.0°

CHECKED BY:  
Elvis.Song

TEL: +86 400 1048 018

WEB: WWW.WOHU-TEK.COM

REMARK:

SHEET  
1/2

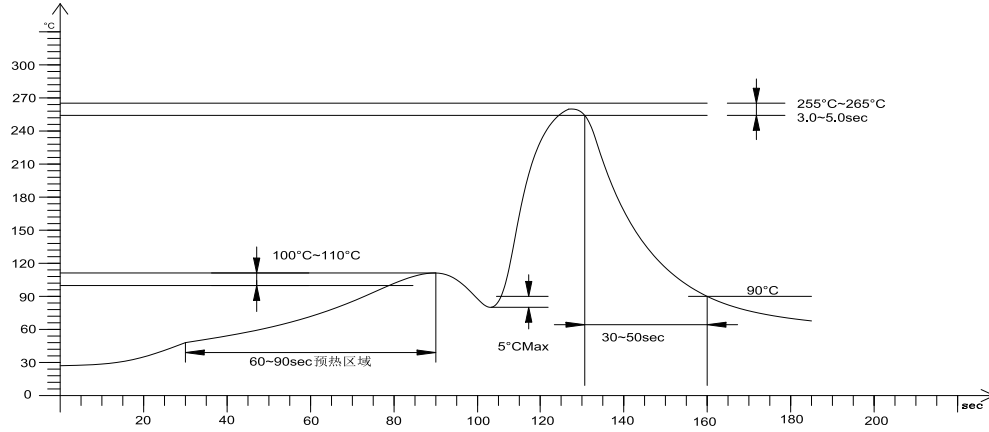


.xx±0.25  
.xxx±0.10

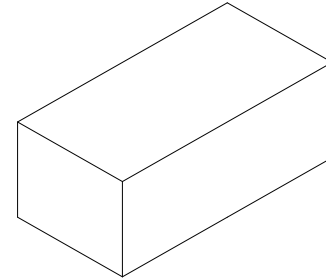
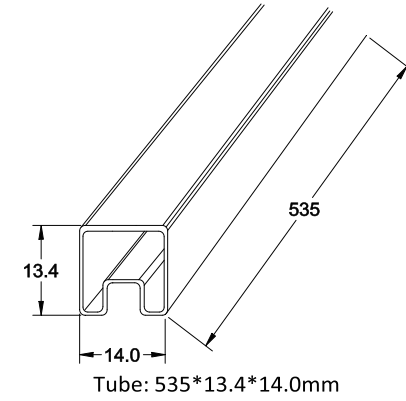
.xx°±1.5°  
.xxx°±1.0°

DESIGND BY:  
Sunny.Xu

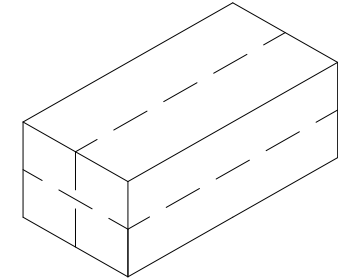
### D. RECOMMEND WAVE SOLDERING CURVE



### E. Packaging specification



Inner Carton: L570\*W180\*H100mm



Export Carton: L580\*W380\*H240mm

Package Quantity:  
 One Tube=16PCS  
 One Carton=16\*60=960PCS  
 One Export Carton=960\*4=3840PCS

**VOOHU** 苏州沃虎电子科技有限公司  
 Su Zhou Voohu Electronic Tech.Co.Ltd

TEL: +86 400 1048 018

WEB: WWW.WOHU-TEK.COM

TITLE:  
100/1000 BASE-T

PART NO.:  
WHDG30102G

REMARK:

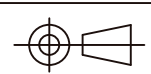
SIZE  
A4

SACLE  
1:1

SHEET  
2/2

UNITS  
MM[INCH]

REV  
A0



GENERAL TOLERANCES  
UNLESS SPECIFIED

$x \pm 0.35$	$x^\circ \pm 3.0^\circ$
$.x \pm 0.30$	$.x^\circ \pm 2.0^\circ$
$.xx \pm 0.25$	$.xx^\circ \pm 1.5^\circ$
$.xxx \pm 0.10$	$.xxx^\circ \pm 1.0^\circ$

APPROVED BY:  
Geoffrey.Song

CHECKED BY:  
Elvis.Song

DESIGND BY:  
Sunny.Xu