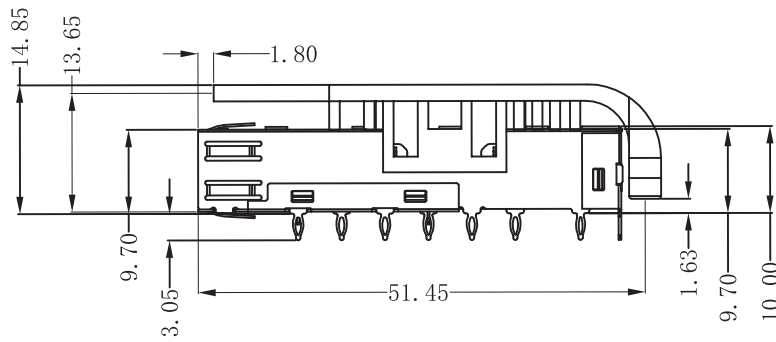
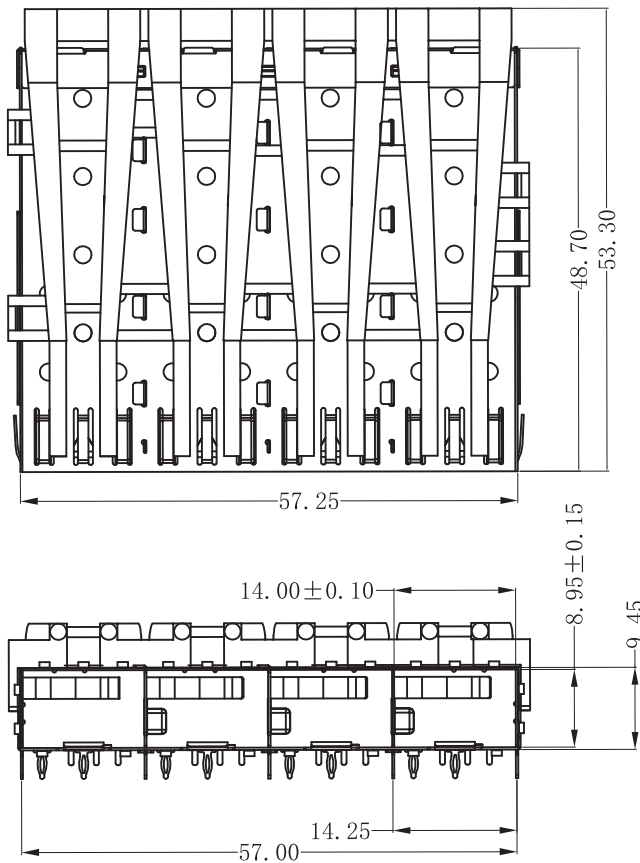


CUSTOMER DRAWING



NOTE:  
 1, DESCRIPTION Q'ty MATERIAL PLATING  
 01 SFP CAGE 1PCS COPPER ALLOY T=0.25 N/A  
 02 LIGHTPIPE 1PCS POLYCARBONATE. UL 94V-0 COLOR: CLEAR N/A  
 2, TEMPERATURE:  
 OPERATION: -40°C~+85°C  
 STORAGE: -55°C~+105°C  
 3, PART NUMBER: SEE TABLE

RoHS Compliant

**VOOHU** 苏州沃虎电子科技有限公司  
 Su Zhou Voohu Electronic Tech.Co.Ltd

TITLE:  
 SFP 1X4 CAGE W/ LIGHT PIPE  
 PART NO.:  
 WHSFP01114W002

SIZE  
 A4  
 UNITS  
 MM[INCH]  
 SACLE  
 1:1  
 REV  
 A0

GENERAL TOLERANCES  
 UNLESS SPECIFIED  

x±0.35	x°±3.0°
.x±0.30	.x°±2.0°
.xx±0.25	.xx°±1.5°
.xxx±0.10	.xxx°±1.0°

APPROVED BY:  
 Geoffrey.Song  
 CHECKED BY:  
 Elvis.Song  
 DESIGND BY:  
 Sunny.Xu

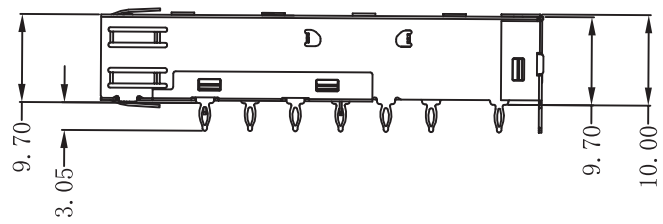
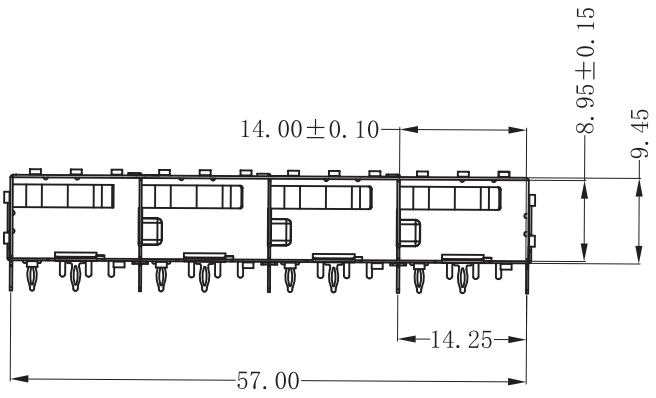
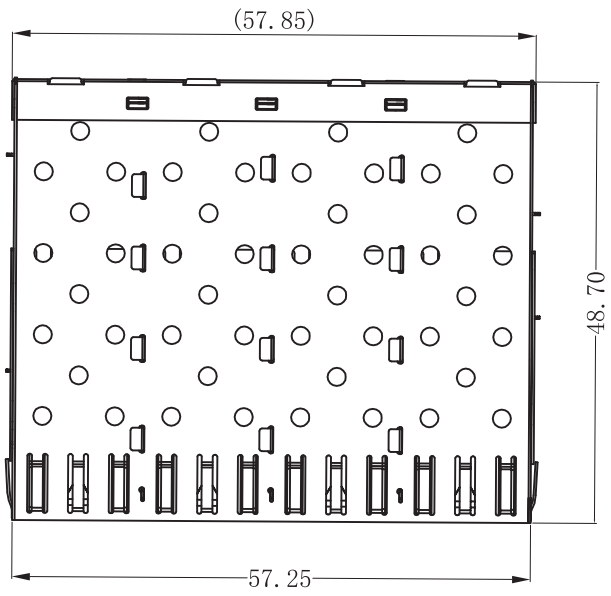
TEL: +86 400 1048 018  
 WEB: WWW.WOHU-TEK.COM

REMARK:

SHEET  
 1/3



CUSTOMER DRAWING



RoHS Compliant



**TITLE:**  
SFP 1X4 CAGE W/ LIGHT PIPE

**PART NO.:**  
WHSFP01114W002

**SIZE**  
A4

**UNITS**  
MM[INCH]

**SACLE**  
1:1

**REV**  
A0

**GENERAL TOLERANCES**  
UNLESS SPECIFIED

$x \pm 0.35$	$x^\circ \pm 3.0^\circ$
$.x \pm 0.30$	$.x^\circ \pm 2.0^\circ$
$.xx \pm 0.25$	$.xx^\circ \pm 1.5^\circ$
$.xxx \pm 0.10$	$.xxx^\circ \pm 1.0^\circ$

**APPROVED BY:**  
Geoffrey.Song

**CHECKED BY:**  
Elvis.Song

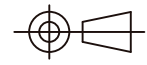
**DESIGN BY:**  
Sunny.Xu

TEL: +86 400 1048 018

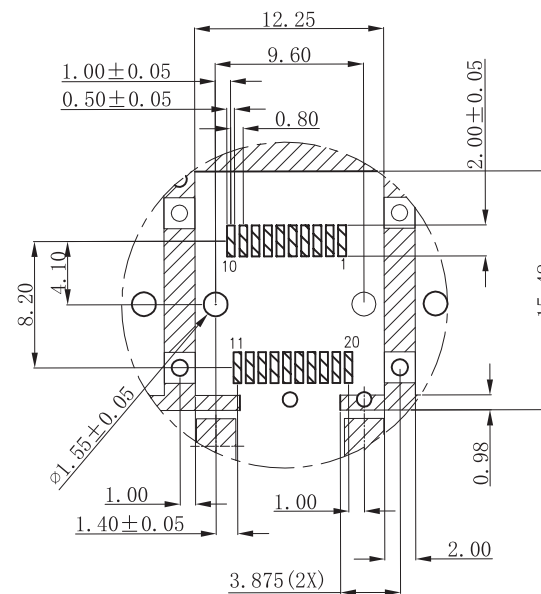
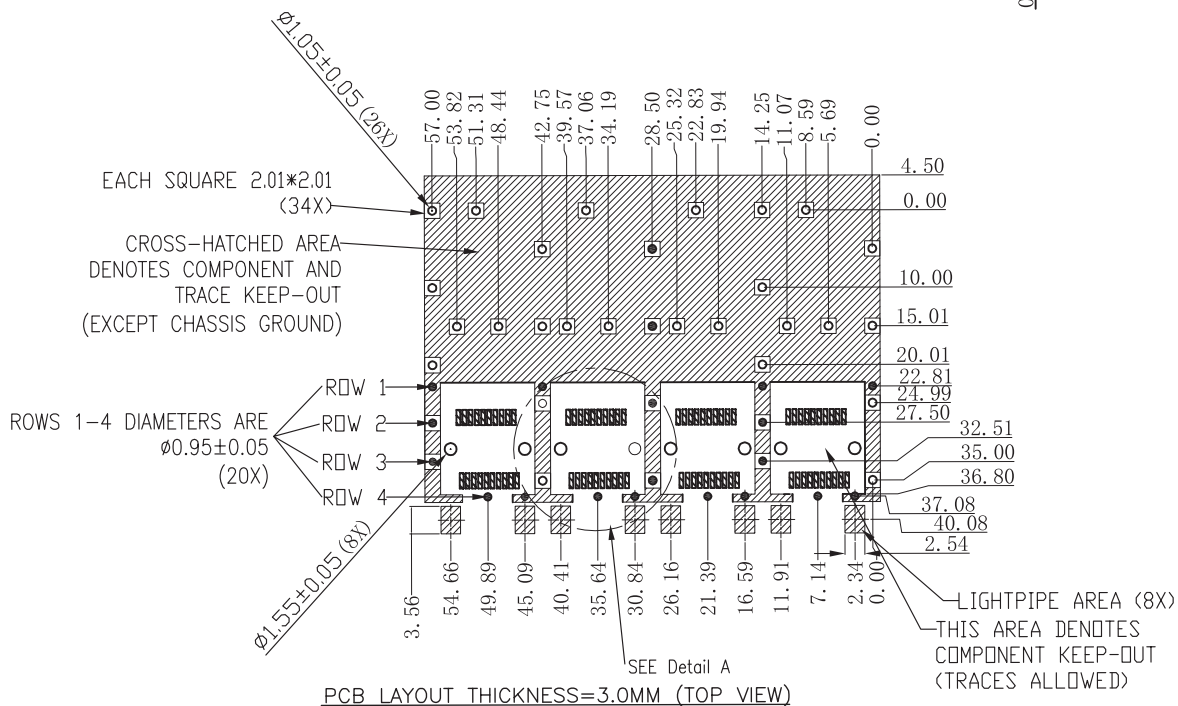
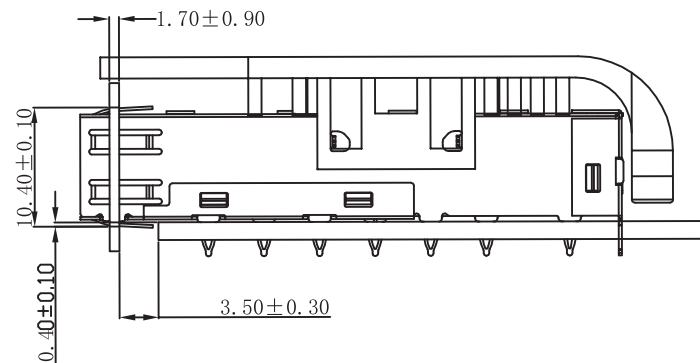
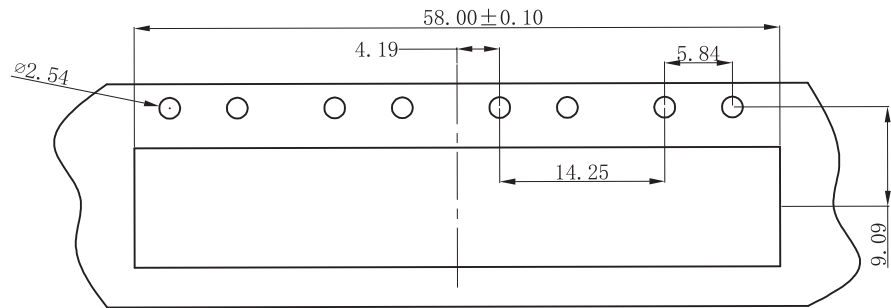
WEB: [WWW.WOHU-TEK.COM](http://WWW.WOHU-TEK.COM)

**REMARK:**

**SHEET**  
2/3



CUSTOMER DRAWING



SEE Detail A  
SCALE 2.5:1

RoHS Compliant

**VOOHU** 苏州沃虎电子科技有限公司  
Su Zhou Voohu Electronic Tech.Co.Ltd

TITLE:  
SFP 1X4 CAGE W/ LIGHT PIPE

SIZE  
A4 UNITS  
MM[INCH]

GENERAL TOLERANCES  
UNLESS SPECIFIED

APPROVED BY:  
Geoffrey.Song

PART NO.:  
WHSFP0114W002

SACLE  
1:1 REV  
A0

$x \pm 0.35$   $x^\circ \pm 3.0^\circ$   
 $.x \pm 0.30$   $.x^\circ \pm 2.0^\circ$

CHECKED BY:  
Elvis.Song

TEL: +86 400 1048 018

WEB: WWW.WOHU-TEK.COM

REMARK:

SHEET  
3/3



$.xx \pm 0.25$   $.xx^\circ \pm 1.5^\circ$   
 $.xxx \pm 0.10$   $.xxx^\circ \pm 1.0^\circ$

DESIGND BY:  
Sunny.Xu