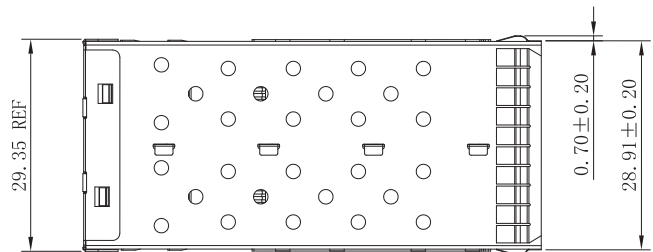
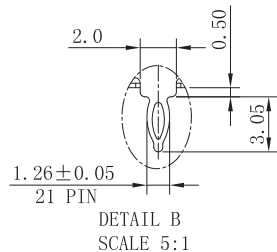


S+C02



NOTE:

MATERIAL:

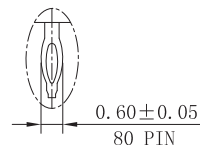
1. CONTACT: PHOSPHOR BRONZE.
2. CONNECTOR HOUSING: LCP UL 94V-0. COLOR: BLACK.
3. MOULDED INSERT: HIGH TEMPERATURE PLASTIC UL 94V-0. COLOR:BLACK.
4. CAGE: COPPER ALLOY.
5. LIGHT PIPES: POLYCARBONATE. UL 94V-0. COLOR:CLEAR
6. LIGHT PIPE HOUSING: PBT UL 94V-0 COLOR:BLACK.
7. EMI SPRING: COPPER ALLOY.

PLATED:

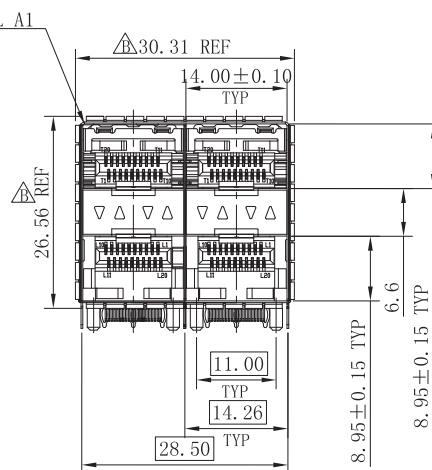
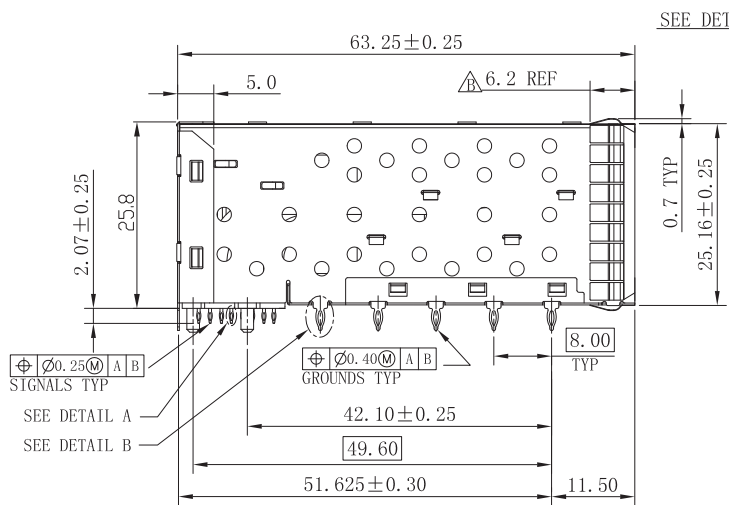
1. CONTACT MATING AREA : PLATING GOLD OVER 1.27 MICROMETERS MINIMUM NICKEL.
2. CONTACT NEEDLE EYE: 2.54 MICROMETERS MINIMUM MATTE TIN OVER 1.27 MICROMETERS MINIMUM NICKEL.

MECHANICAL REQUIREMENT:

1. DURABILITY: 100 CYCLES MIN.
2. INSERTION AND EXTRACTION FORCE: 40N MAX & 12.5N MAX



DETAIL A
SCALE 10:1



ENVIRONMENTAL:

1. LOW LEVEL CONTACT RESISTANCE (LLCR) :
ΔR 10 MILLIOHMS MAXIMUM FOR SHIELD AND SIGNAL CONTACTS.
2. DIELECTRIC WITHSTANDING VOLTAGE: 300V AC/MAX.
3. INSULATION RESISTANCE: 1x10⁹ OHMS MINIMUM.
4. RATINGS CURRENT: 0.5 AMPS MAX.
5. RATINGS VOLTAGE: 30 VOLTS DC/AC(RMS) MAX.
6. OPERATION: -40° C~+85° C.
7. STORAGE: -55° C~+105° C.
8. ROHS COMPLIANT

RoHS Compliant

VOOHU 苏州沃虎电子科技有限公司
Su Zhou Voohu Electronic Tech.Co.Ltd

TITLE:
SFP+ 2x2 CONNECTOR

SIZE
A4
UNITS
MM[INCH]

GENERAL TOLERANCES
UNLESS SPECIFIED

APPROVED BY:
Geoffrey.Song

PART NO.:
WHSFP15422D008

SACLE
1:1
REV
A0

x±0.35	x°±3.0°
.x±0.30	.x°±2.0°

CHECKED BY:
Elvis.Song

REMARK:
gold plated 15u"

SHEET
1/4

.xx±0.25	.xx°±1.5°
.xxx±0.10	.xxx°±1.0°

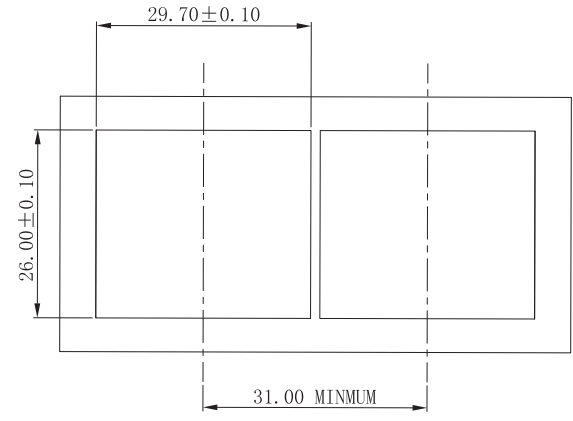
DESIGND BY:
Sunny.Xu

TEL: +86 400 1048 018

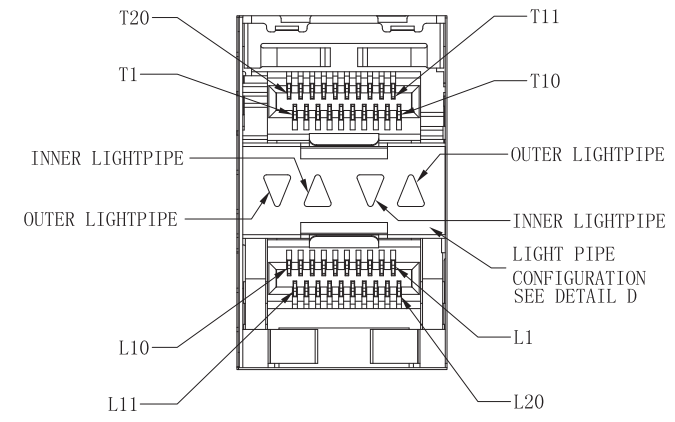
WEB: WWW.WOHU-TEK.COM

S+C02

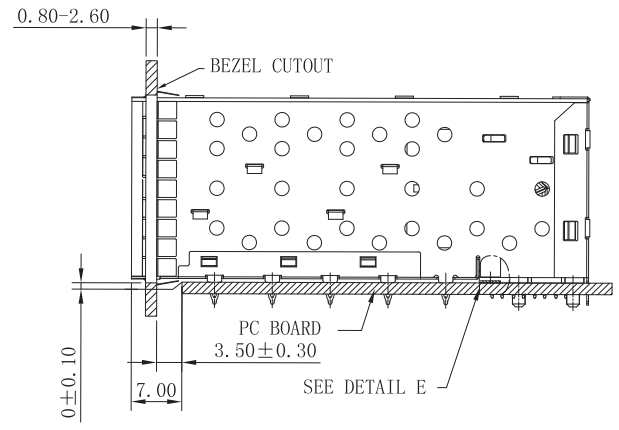
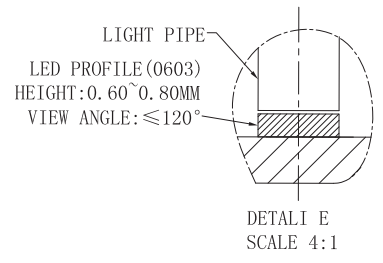
REV. 版本	ECN NO. 变更说明	日期




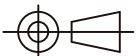
BEZEL CUT-OUT CENTER SPACING DETAIL
BEZEL THICKNESS:0.8-2.6



DETAIL A1
SCALE 4:1

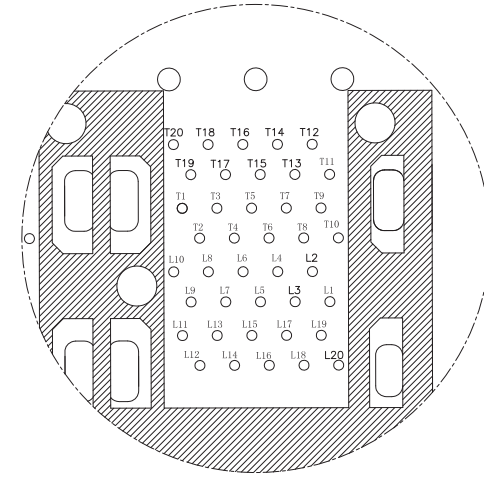
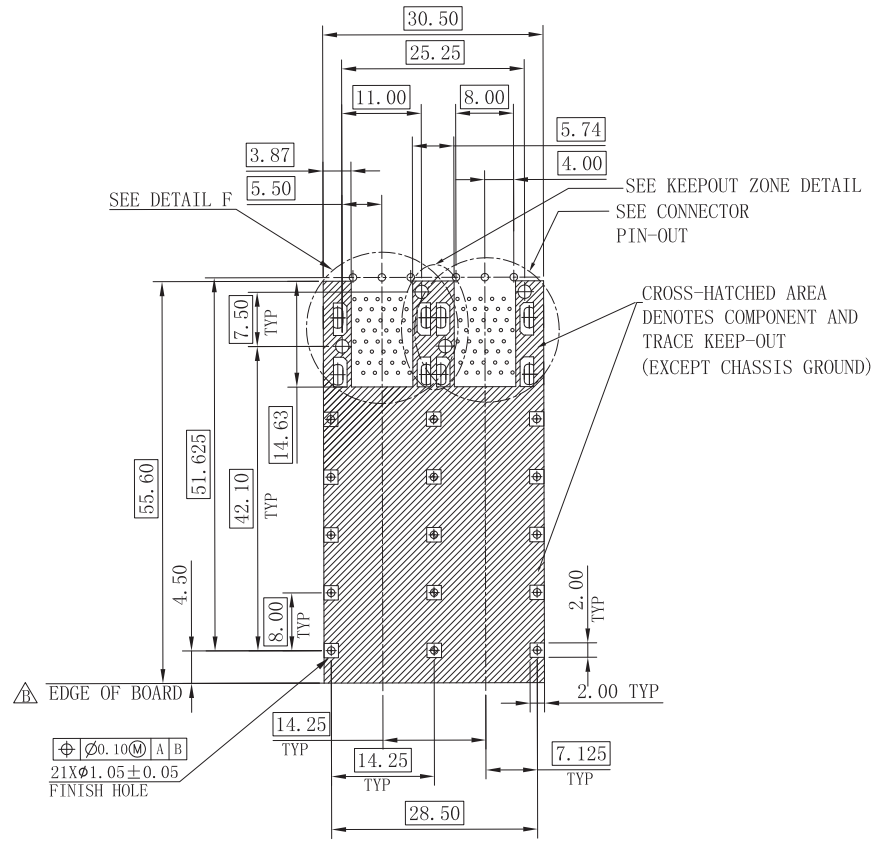


RoHS Compliant

A	 苏州沃虎电子科技有限公司 Su Zhou Voohu Electronic Tech.Co.Ltd	TITLE: SFP+ 2x2 CONNECTOR	SIZE A4	UNITS MM[INCH]	GENERAL TOLERANCES UNLESS SPECIFIED		APPROVED BY: Geoffrey.Song
		PART NO.: WHSFP15422D008	SACLE 1:1	REV A0	x±0.35	x°±3.0°	CHECKED BY: Elvis.Song
		REMARK: gold plated 15u"	SHEET 2/4		.xx±0.25	.xx°±1.5°	DESIGND BY: Sunny.Xu
	TEL: +86 400 1048 018	WEB: WWW.WOHU-TEK.COM			.xxx±0.10	.xxx°±1.0°	

S+C02

REV. 版本	ECN NO. 变更说明	日期



CONNECTOR PIN-OUT
COMPONENT SIDE OF BOARD

RECOMMENDED PCB LAYOUT-COMPONENT SIDE
RECOMMENDED PCB THICKNESS-2.63 MM

THE ENTIRE AREA OF THE CONNECTOR FOOTPRINT
TO BE CONSIDERED THE KEEP OUT AREA FOR COMPONENTS
(OTHER THAN LIGHT PIPE LED'S)
THIS AREA IS INDICATED BY THE DASHED LINE

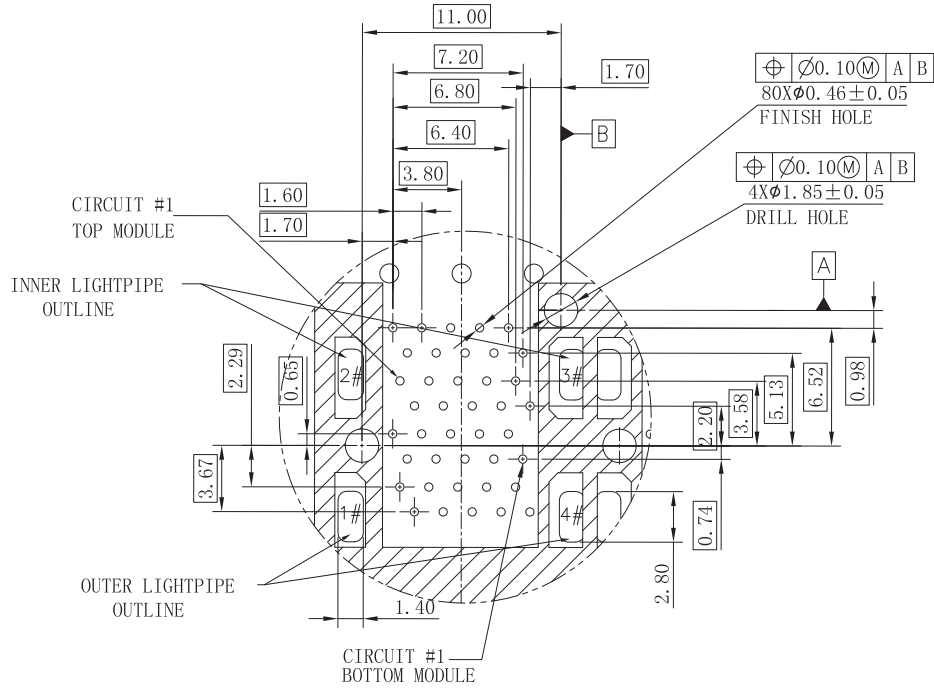
RoHS Compliant



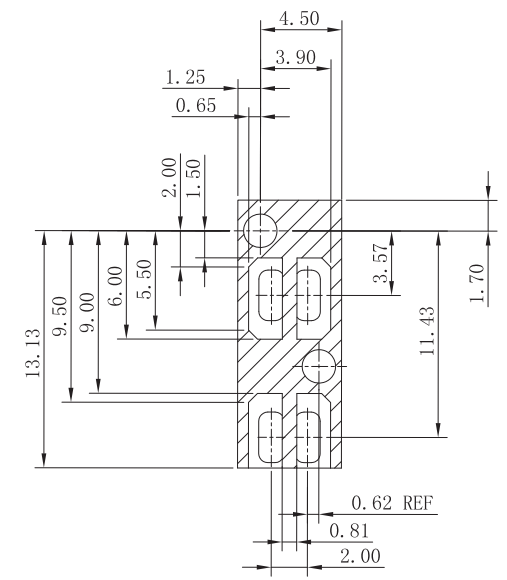
A	TEL: +86 400 1048 018	WEB: WWW.WOHU-TEK.COM	TITLE: SFP+ 2x2 CONNECTOR	SIZE A4	UNITS MM[INCH]	GENERAL TOLERANCES UNLESS SPECIFIED		APPROVED BY: Geoffrey.Song
			PART NO.: WHSFP15422D008	SACLE 1:1	REV A0	x±0.35	x°±3.0°	CHECKED BY: Elvis.Song
			REMARK: gold plated 15u"	SHEET 3/4		.xx±0.25	.xx°±1.5°	DESIGND BY: Sunny.Xu
1	2	3	4	5	6	7	8	

S+C02

REV. 版本	ECN NO. 变更说明	日期



DETAIL F
SCALE 5:1



KEEPOUT ZONE
DETAIL SCALE 5:1

RoHS Compliant



TITLE:
SFP+ 2x2 CONNECTOR

PART NO.:
WHSFP15422D008

REMARK:
gold plated 15u"

SIZE
A4

UNITS
MM[INCH]

SACLE
1:1

SHEET
4/4

GENERAL TOLERANCES UNLESS SPECIFIED	
$x \pm 0.35$	$x^\circ \pm 3.0^\circ$
$.x \pm 0.30$	$.x^\circ \pm 2.0^\circ$
$.xx \pm 0.25$	$.xx^\circ \pm 1.5^\circ$
$.xxx \pm 0.10$	$.xxx^\circ \pm 1.0^\circ$

APPROVED BY:
Geoffrey.Song

CHECKED BY:
Elvis.Song

DESIGND BY:
Sunny.Xu

TEL: +86 400 1048 018

WEB: WWW.WOHU-TEK.COM