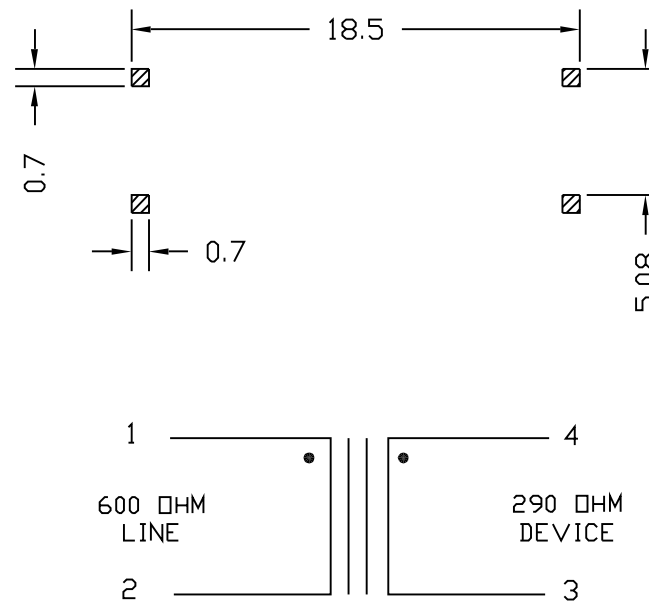
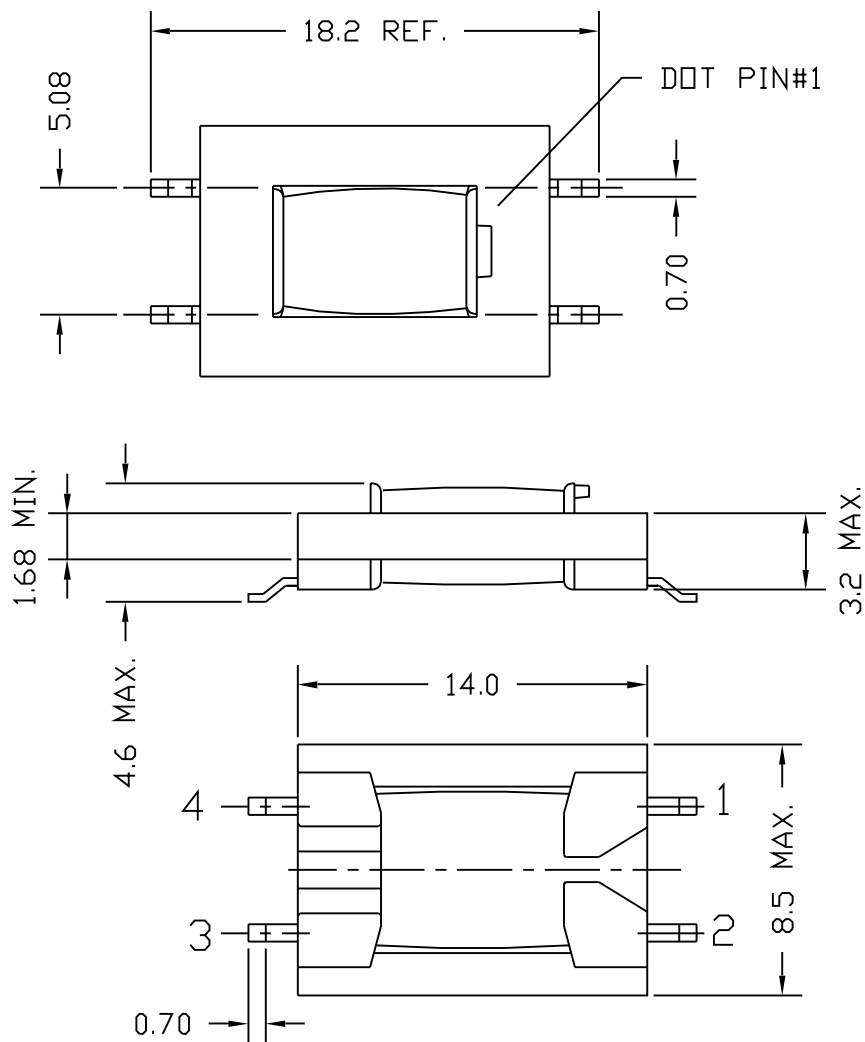


REACH & RoHS  
COMPLIANT



ELECTRICAL CHARACTERISTICS: (671-8447, 2786A3 COMPATIBLE)

1. D.C.R. : PIN 1-2 = 141  $\Omega$ M  $\pm$ 10% PIN 3-4 = 171  $\Omega$ M  $\pm$ 10%
2. INDUCTANCE (@1KHZ, 0.1Vrms) : PIN 1-2 = 1.6Hy MIN.
3. INSERTION LOSS (@ 1KHZ, 0dBm, PIN 3-4 W/H 290  $\Omega$ M)  
PIN 1-2 = 3.3 dB  $\pm$ 0.2dB
4. FREQ. RESP.(REF. 1KHZ) : @200HZ-5KHZ =  $\pm$ 0.1dB
5. RETURN LOSS (REF. 600  $\Omega$ M) : @ 300HZ - 3500HZ = 30dB MIN.
6. TURNS RATIO : PIN 1-2 : PIN4-3 = 1  $\pm$ 1%
7. LONGITUDINAL BAL. = 60dB MIN.(@200-4KHZ)
8. T.H.D.(@600HZ, -10dBm) = -85dB MAX.
9. HI-POT (@1250VAC. 1mA. 2SEC) PRI.-SEC

**VOOHU** 苏州沃虎电子科技有限公司  
Su Zhou Voohu Electronic Tech.Co.Ltd

TITLE:  
Audio Transformer

SIZE  
A4 UNITS  
MM[INCH]

GENERAL TOLERANCES  
UNLESS SPECIFIED

APPROVED BY:  
Geoffrey.Song

PART NO.:  
WHTT4204

SACLE  
1:1 REV  
A0

$x \pm 0.35$   $x^\circ \pm 3.0^\circ$   
 $.x \pm 0.30$   $.x^\circ \pm 2.0^\circ$

CHECKED BY:  
Elvis.Song

TEL: +86 400 1048 018

WEB: WWW.WOHU-TEK.COM

REMARK:

SHEET  
1/1



$.xx \pm 0.25$   $.xx^\circ \pm 1.5^\circ$   
 $.xxx \pm 0.10$   $.xxx^\circ \pm 1.0^\circ$

DESIGND BY:  
Sunny.Xu