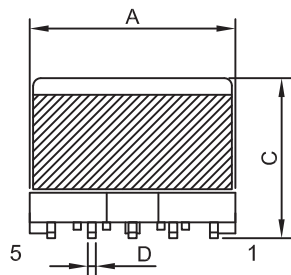
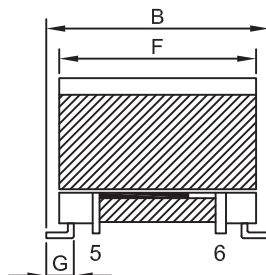


REACH & RoHS
COMPLIANT

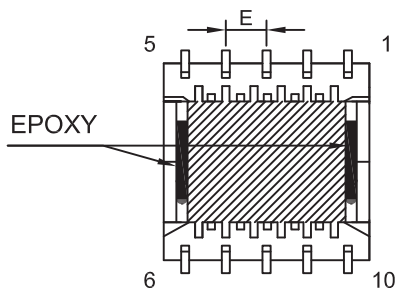
1. OUTLINE DIMENSION:(UNIT:mm)/外形尺寸 (单位: mm)



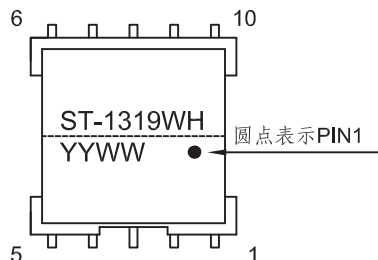
ELEVATION



SIDE VIEW



BOTTOM VIEW



标签内容

NOTE:

- 1.N1绕组交叉.
- 2.所有绝缘胶带用高温胶带.
- 3.磁芯单边开气隙(装于PIN1-5侧), 外包7mm胶带2Ts.
- 4.底部磁芯与线包空隙处点黑胶固定.(如图)
- 5.产品不含浸.
- 6.标签如上图所示,印字内容中YYWW代表年份与周期.

A	B	C	D	E	F	G	
14.2MAX	17.5MAX	13.0MAX	SQ0.50±0.1	2.5±0.3	14.05MAX	2.25 REF	

VOOHU 苏州沃虎电子科技有限公司
Su Zhou Voohu Electronic Tech.Co.Ltd

TITLE:
变压器/TRANSFORMER

SIZE
A4
UNITS
MM[INCH]

GENERAL TOLERANCES
UNLESS SPECIFIED

APPROVED BY:
Geoffrey.Song

PART NO.:
ST1319WH

SACLE
1:1
REV
A0

$x \pm 0.35$	$x^\circ \pm 3.0^\circ$
$.x \pm 0.30$	$.x^\circ \pm 2.0^\circ$

CHECKED BY:
Elvis.Song

TEL: +86 400 1048 018

WEB: WWW.WOHU-TEK.COM

REMARK:
EP13/13

SHEET
1/3

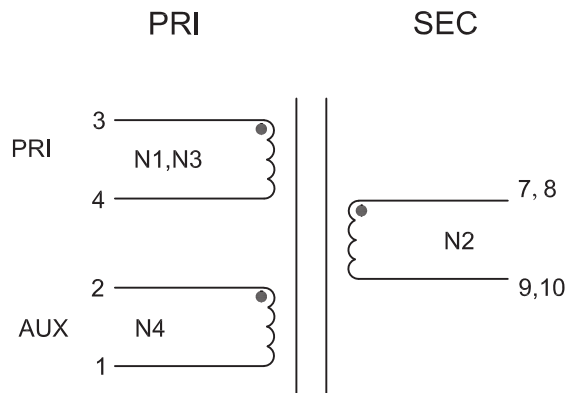


$.xx \pm 0.25$	$.xx^\circ \pm 1.5^\circ$
$.xxx \pm 0.10$	$.xxx^\circ \pm 1.0^\circ$

DESIGND BY:
Sunny.Xu

REACH & RoHS
COMPLIANT

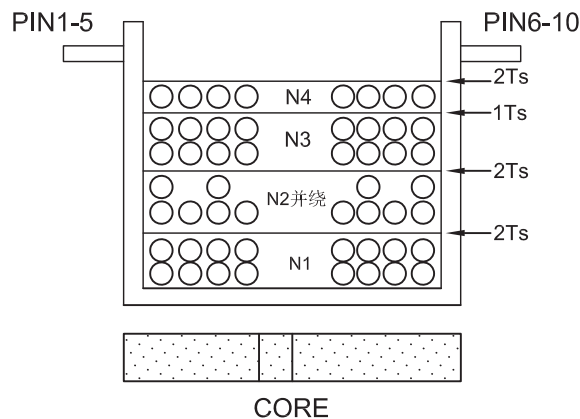
2. CIRCUIT DIAGRAM/电气原理图



● START

PIN7,8 & PIN9,10 分别在PCB上短接在一起

3. CONSTRUCTION DIAGRAM/内部结构图



4. WINDING INFORMATIONS TABLE/绕制明细表

绕组 WINDING	挡墙胶带 MARGIN TAPE		起始-收尾 S - F	线材 WIRE	圈数 TURN	绝缘胶带 TAPE	备注 REMARK
	PIN1-5 SIDE	PIN6-10 SIDE					
N1	/	/	3-4	2UEW-H Ø0.15*2P	36Ts	2Ts	密绕/CLOSE
N2	/	/	7-9	2UEW-H Ø0.28*2P	9Ts	2Ts	并绕, 密绕+散绕 BIFILAR, CLOSE/SPACE
	/	/	8-10	2UEW-H Ø0.28*2P	9Ts		
N3	/	/	3-4	2UEW-H Ø0.15*2P	36Ts	1Ts	密绕/CLOSE
N4	/	/	2-1	2UEW-H Ø0.15*2P	18Ts	2Ts	密绕/CLOSE

VOOHU 苏州沃虎电子科技有限公司
Su Zhou Voohu Electronic Tech.Co.Ltd

TITLE:
变压器/TRANSFORMER

SIZE
A4

UNITS
MM[INCH]

GENERAL TOLERANCES
UNLESS SPECIFIED

APPROVED BY:
Geoffrey.Song

PART NO.:
ST1319WH

SACLE
1:1

REV
A0

$x \pm 0.35$ $x^\circ \pm 3.0^\circ$
 $.x \pm 0.30$ $.x^\circ \pm 2.0^\circ$

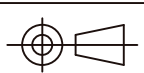
CHECKED BY:
Elvis.Song

TEL: +86 400 1048 018

WEB: WWW.WOHU-TEK.COM

REMARK:
EP13/13

SHEET
2/3



$.xx \pm 0.25$ $.xx^\circ \pm 1.5^\circ$
 $.xxx \pm 0.10$ $.xxx^\circ \pm 1.0^\circ$

DESIGND BY:
Sunny.Xu

REACH & RoHS
COMPLIANT

5. CHARACTERISTIC /电气性能

NO. 序号	ITEM 项目	TERT POINT 测试点	TECHNICAL CRITERION 技术标准	TEST CONDITION & INSTRUMENT 测试条件&仪器
5.1	INDUCTANCE 电感	L (3-4)	127uH±10%	CHROMA3250(100Ω) 200KHz/0.1V AT 25℃
5.2	DC OVERLAP 直流叠加	L (3-4)	Ldc(3-4) > 90%L(3-4)	TH2819+TH1773 IDC= 1.0A 200KHz/0.1V AT 25℃
5.3	LEAKAGE INDUCTANCE 漏感	LK(3-4) SHORT OTHER PINS	0.95uH MAX	CHROMA3250(100Ω) 200KHz/0.1V AT 25℃
5.4	DCR 直流电阻	R(3-4)	222mΩ MAX	TH2511 AT25℃
		R(7,8-9,10)	39mΩ MAX	
		R(2-1)	348mΩ MAX	
5.5	HI-POT 抗电强度	PRI-SEC	AC1500V	CHROMA19053 1mA 1SEC 50Hz
5.6	TURNS RATIO 圈数比	3-4 : 7,8-9,10	1.0 : 0.25 ±3%	CHROMA3250(100Ω) 20KHz/1V AT 25℃
		3-4 : 2-1	1.0 : 0.50 ±3%	
5.7	OPERATING TEMPERATURE (INCLUDING SELF TEMPERATURE RISE)		-40℃ TO 125℃	
5.8	STORAGE TEMPERATURE		-40℃ TO 125℃	

VOOHU 苏州沃虎电子科技有限公司
Su Zhou Voohu Electronic Tech.Co.Ltd

TITLE:
变压器/TRANSFORMER

SIZE
A4
UNITS
MM[INCH]

GENERAL TOLERANCES
UNLESS SPECIFIED

APPROVED BY:
Geoffrey.Song

PART NO.:
ST1319WH

SACLE
1:1

REV
A0

x±0.35
.x±0.30

x°±3.0°
.x°±2.0°

CHECKED BY:
Elvis.Song

TEL: +86 400 1048 018

WEB: WWW.WOHU-TEK.COM

REMARK:
EP13/13

SHEET
3/3



.xx±0.25
.xxx±0.10

.xx°±1.5°
.xxx°±1.0°

DESIGND BY:
Sunny.Xu