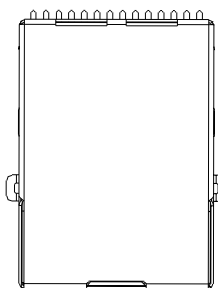
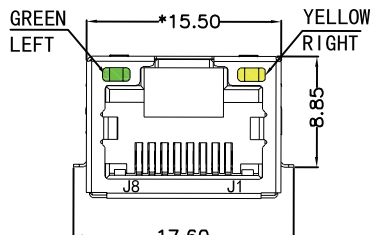


1 REACH & RoHS COMPLIANT

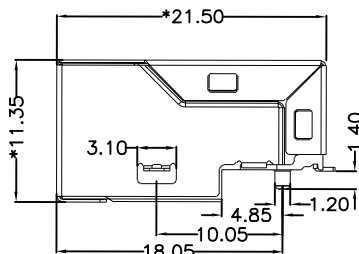
6	7	8	
REV.	ECN / DESCRIPTION	BY	DATE
A0	NEW	Sunny.Xu	2018.05.18



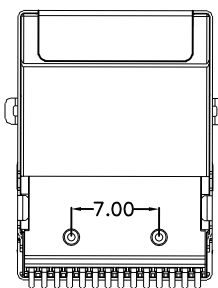
TOP VIEW



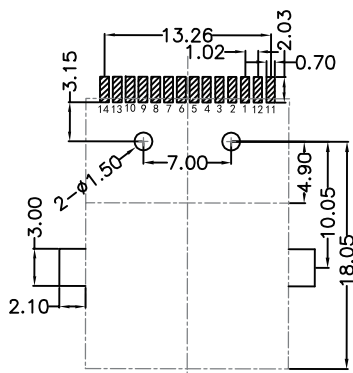
FRONT VIEW



RIGHT SIDE VIEW



BOTTOM VIEW



RECOMMENDED PCB LAYOUT
VIEWED FROM COMPONENT SIDE

MATERIAL:

HOUSING: LCP,UL94V-0,BLACK.
 TERMINALS BRACKET: LCP,UL94V-0,BLACK.
 SHIELD: C2680,T=0.20MM,NICKEL PLATING ON ALL AREA.
 TERMINAL: PHOSPHOR BRONZE C5191,T=0.35MM,
 6U" GOLD PLATING ON CONTACT AREA.

MECHANICAL:

DURABILITY: 750 CYCLES MIN.
 MATING FORCE: 23N MAX.
 OPERATING TEMPERATURE: -40°C~+85°C.
 STORAGE TEMPERATURE: -40°C~+85°C.
 ALL CRITICAL DIMENSIONS WITH "*"

VOOHU 苏州沃虎电子科技有限公司
 Su Zhou Voohu Electronic Tech.Co.Ltd

TITLE:
 TAB-UP 1X1 2.5G贴片
 PART NO.:
 SYT211Q575AA2A7CBS2057

SIZE
 A4
 UNITS
 MM[INCH]
 SACLE
 1:1
 REV
 A0

GENERAL TOLERANCES UNLESS SPECIFIED	
x±0.35	x°±3.0°
.x±0.30	.x°±2.0°
.xx±0.25	.xx°±1.5°
.xxx±0.10	.xxx°±1.0°

APPROVED BY:
 Geoffrey.Song
 CHECKED BY:
 Elvis.Song
 DESIGND BY:
 Sunny.Xu

TEL: +86 400 1048 018

WEB: WWW.WOHU-TEK.COM

REMARK:

SHEET
 1/4

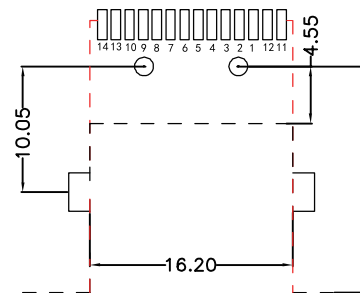
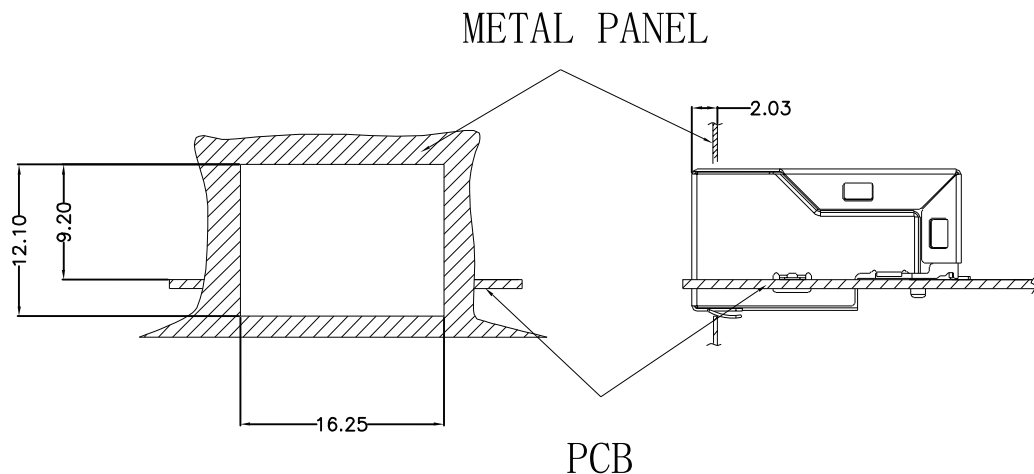


REACH & RoHS
COMPLIANT

REV.	ECN / DESCRIPTION	BY	DATE
A0	NEW	Sunny.Xu	2018.05.18

Suggested Panel Opening:

Keep-Out Area (Component Side View):



Plug In Side

UNIT: mm / inch
Tolerances: ± 0.10 / 0.004

UNIT: mm / inch
Tolerances: ± 0.10 / 0.004

VOOHU 苏州沃虎电子科技有限公司
Su Zhou Voohu Electronic Tech.Co.Ltd

TITLE:
TAB-UP 1X1 2.5G贴片
PART NO.:
SYT211Q575AA2A7CBS2057

SIZE
A4
SACLE
1:1
SHEET
2/4

GENERAL TOLERANCES
UNLESS SPECIFIED

$x \pm 0.35$	$x^\circ \pm 3.0^\circ$
$.x \pm 0.30$	$.x^\circ \pm 2.0^\circ$
$.xx \pm 0.25$	$.xx^\circ \pm 1.5^\circ$
$.xxx \pm 0.10$	$.xxx^\circ \pm 1.0^\circ$

APPROVED BY:
Geoffrey.Song
CHECKED BY:
Elvis.Song
DESIGND BY:
Sunny.Xu

TEL: +86 400 1048 018

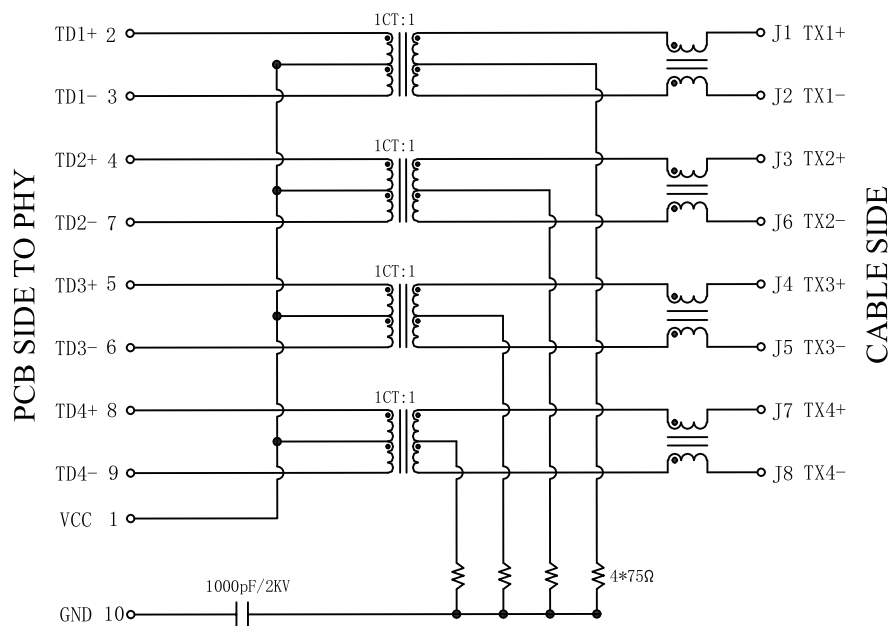
WEB: WWW.WOHU-TEK.COM

REMARK:



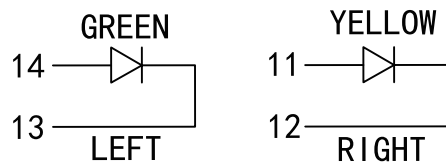
REACH & RoHS
COMPLIANT

REV.	ECN / DESCRIPTION	BY	DATE
A0	NEW	Sunny.Xu	2018.05.18



Electrical:

- Turn ratio: 2~3: J1~J2=1CT:1CT(±2%).
4~7: J3~J6=1CT:1CT(±2%).
5~6: J4~J5=1CT:1CT(±2%).
8~9: J7~J8=1CT:1CT(±2%).
- OCL: 180 uH MIN @ 100 KHz, 100 mV
- Insertion Loss: -0.5 dB Max 1~50MHz.
-1.0 dB Max 50~125MHz.
-2.0 dB Max 125~250MHz.
- Return loss: -20dB Min 1 ~ 40MHz;
-16+10LOG₁₀(f/40MHz) Min 40~250MHz.
- Reflected CM to DIFF Conversion (REF):
-30dB MAX 1MHz~50MHz
-27dB MAX 50MHz~100MHz
-24dB MAX 100MHz~200MHz
- Reflected DIFF to CM Conversion (REF):
-48 dB MIN 1MHz TO 10MHz
-48+19LOG(Freq MHz/10MHz) dB MIN 10 MHz TO 200 MHz
- Cross talk: -35dB Min 1~40MHz;
-35+15log(Freq MHz/40MHz)dB MIN 40MHz TO 125MHz
- CMR: -25dB Min 1~200MHz;
- Hi-Pot: 2250VDC MIN AT 60 SECONDS



LED Specification

Standard LED Color	LED Wavelength	Foward(A)	Foward(V)
Green	568nm	20mA	2.2-2.4V
Yellow	590nm	20mA	2.1-2.5V

VOOHU 苏州沃虎电子科技有限公司
Su Zhou Voohu Electronic Tech.Co.Ltd

TITLE:
TAB-UP 1X1 2.5G贴片
PART NO.:
SYT211Q575AA2A7CBS2057

SIZE
A4
UNITS
MM[INCH]
SACLE
1:1
REV
A0

GENERAL TOLERANCES
UNLESS SPECIFIED
x±0.35
.x±0.30
.xx±0.25
.xxx±0.10

APPROVED BY:
Geoffrey.Song
CHECKED BY:
Elvis.Song
DESIGND BY:
Sunny.Xu

TEL: +86 400 1048 018

WEB: WWW.WOHU-TEK.COM

REMARK:

SHEET
3/4

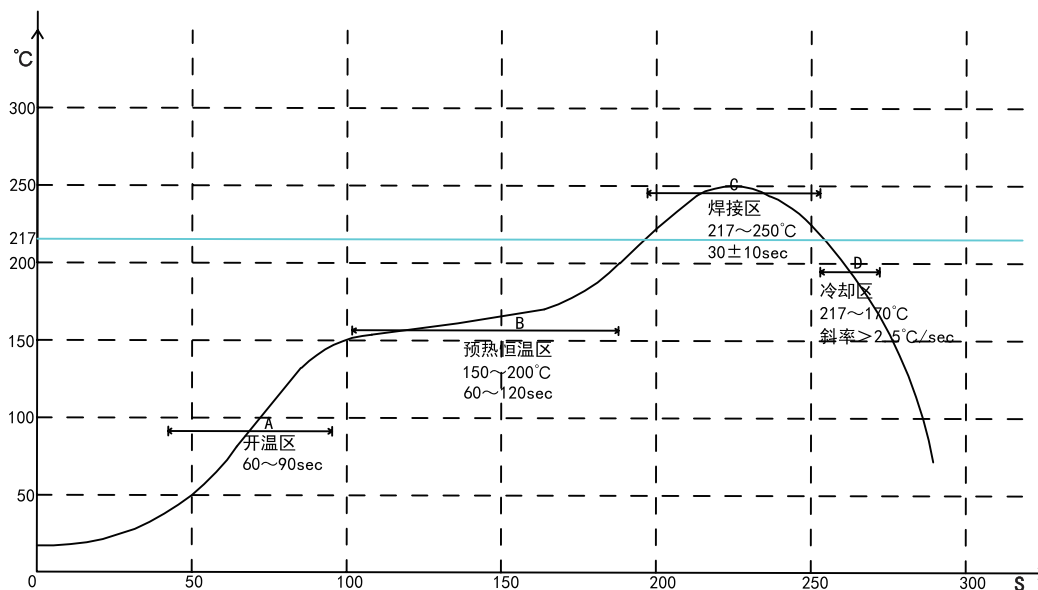


.xx±1.5°
.xxx±1.0°

REACH & RoHS
COMPLIANT

REV.	ECN / DESCRIPTION	BY	DATE
A0	NEW	Sunny.Xu	2018.05.18

PROFILE OF REFLOW SOLDERING



- A. Temperature range of open
- B. Preheat temperature zone
- C. The welding zone
- D. The cooling zone
- Tip temperature: 265±5°C.
- Tip temperature time: 30±10Sec.
- Tip melting point of Sn96.5/Ag3/Cu0.5.

VOOHU 苏州沃虎电子科技有限公司
Su Zhou Voohu Electronic Tech.Co.Ltd

TITLE:
TAB-UP 1X1 2.5G贴片
PART NO.:
SYT211Q575AA2A7CBS2057

SIZE
A4
UNITS
MM[INCH]
SACLE
1:1
REV
A0

GENERAL TOLERANCES UNLESS SPECIFIED	
x±0.35	x°±3.0°
.x±0.30	.x°±2.0°
.xx±0.25	.xx°±1.5°
.xxx±0.10	.xxx°±1.0°

APPROVED BY:
Geoffrey.Song
CHECKED BY:
Elvis.Song
DESIGND BY:
Sunny.Xu

TEL: +86 400 1048 018

WEB: WWW.WOHU-TEK.COM

REMARK:

SHEET
4/4

