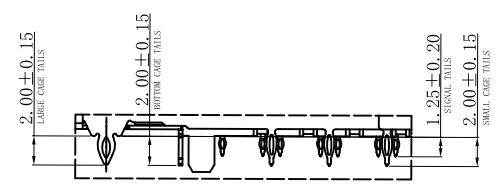
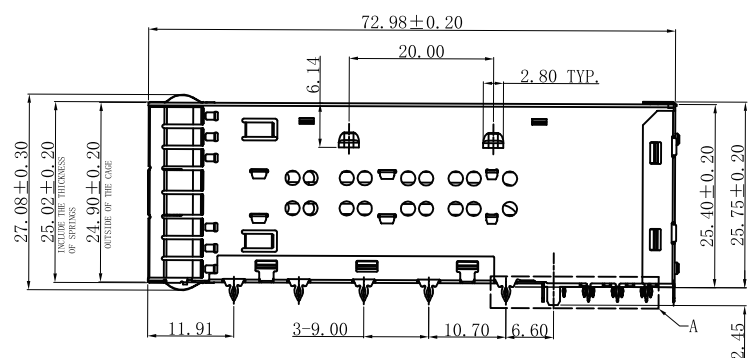
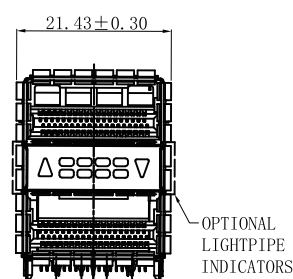
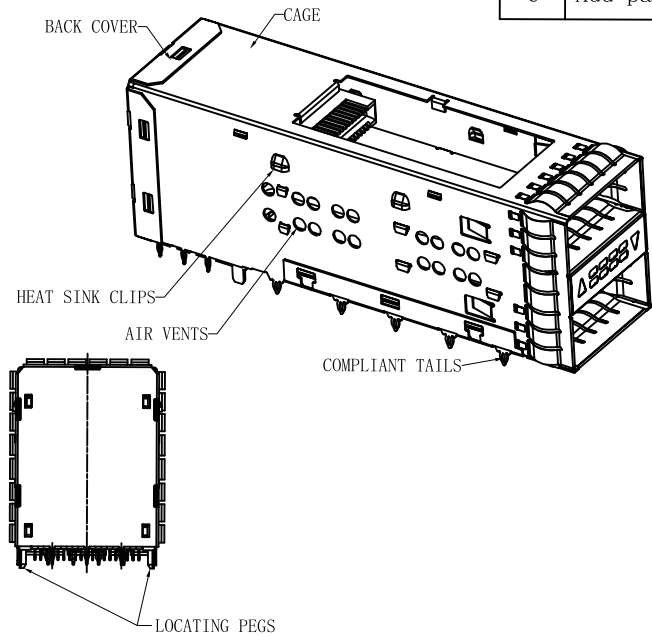
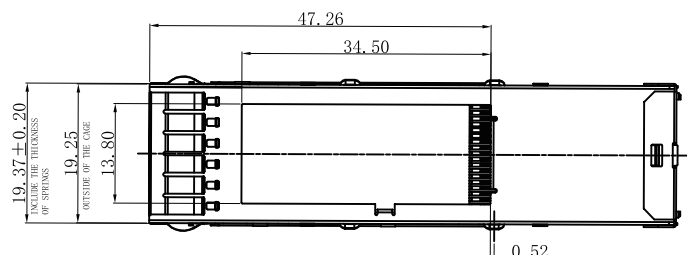


REACH & RoHS
COMPLIANT

REV. 版本	ECN NO. 变更说明	DATE 日期
A	FIRST ISSUE	20170915
B	Add part number	20221215
C	Add part number	20230107



DETAIL A
SCALE 2:1

NOTES:

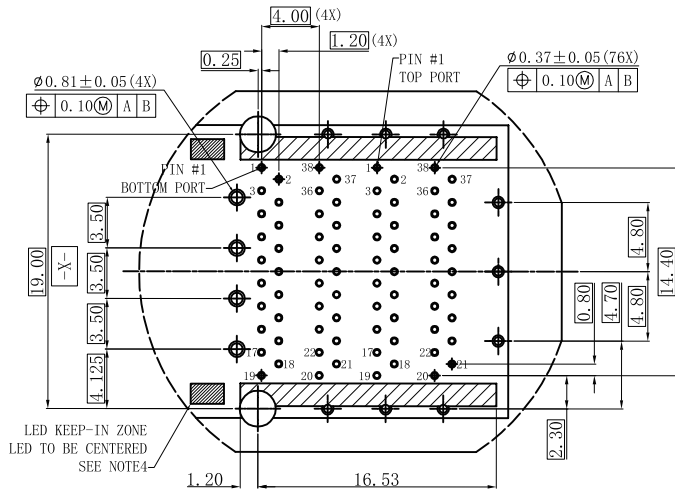
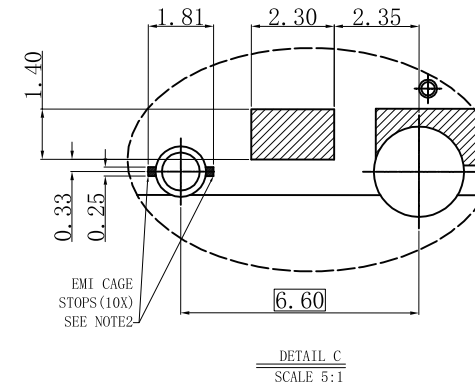
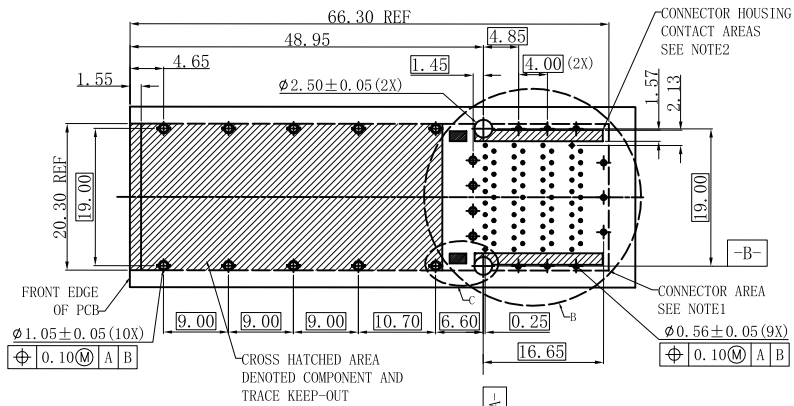
- MATERIAL:**
CAGE: COPPER ALLOY, THICKNESS: 0.25mm;
EMI SPRING FINGERS: COPPER ALLOY, THICKNESS: 0.06mm REF;
LIGHT PIPES: POLYCARBONATE;
CONNECTOR HOUSING: GLASS FILED THERMOPLASTIC, UL: 94V-0, COLOR: BLACK;
CONTACTS: HIGH PERFORMANCE COPPER ALLOY.
- FINISH:**
CAGE: 0.762um Min. NICKLE OVERALL;
EMI SPRING FINGERS: 1.27-3.81um NICKLE OVERALL;
CONTACTS: 0.762um Min GOLD PLATING OVER NICKLE IN CONTACT AREA;
COMPLIANT TAIL: 2.54-5.08um TIN OVER NICKLE.
- PACKAGING:**
PRODUCT PACKAGED IN TRAYS AND CARTONS.

LIGHTPIPE STYLE TABLE	
	LEFT UP RIGHT DOWN LIGHTPIPE INDICATORS
W/O LOGO: WHSFP28221F008	
W LOGO: WHSFP28221F001	

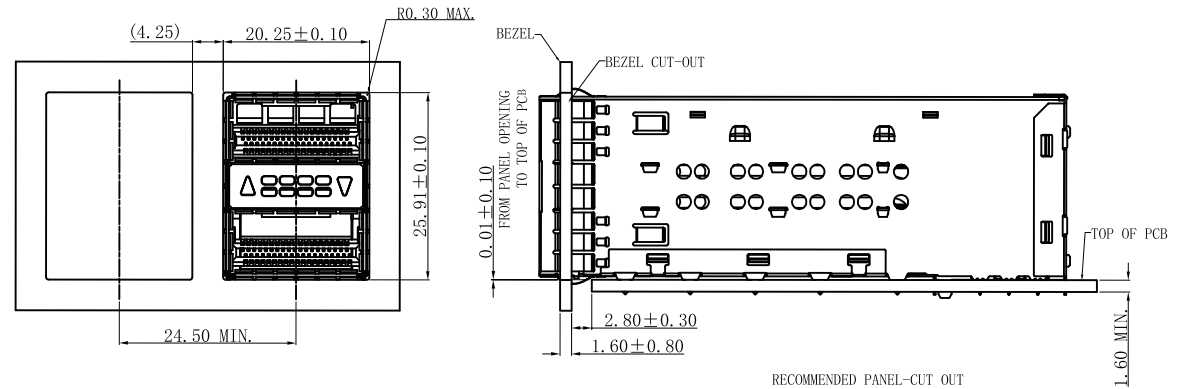
苏州沃虎电子科技有限公司 Su Zhou Voohu Electronic Tech.Co.Ltd	TITLE: QSFP+ 2X1 ASSMBLY	SIZE A4	UNITS MM[INCH]	GENERAL TOLERANCES UNLESS SPECIFIED		APPROVED BY: Geoffrey.Song
	PART NO.: WHSFP28221F008	SACLE 1:1	REV A0	x±0.35	x°±3.0°	CHECKED BY: Elvis.Song
	REMARK:	SHEET 1/2		.xx±0.25	.xx°±1.5°	DESIGND BY: Sunny.Xu
TEL: +86 400 1048 018	WEB: WWW.WOHU-TEK.COM			.xxx±0.10	.xxx°±1.0°	

REACH & RoHS
COMPLIANT

REV. 版本	ECN NO. 变更说明	DATE 日期



DETAIL B
SCALE 2:1
PCB PORT LAYOUT
COMPONENT PORT



NOTES:

1. THE ENTIRE AREA UNDER THE CONNECTOR(DASHED LINES) IS TO BE CONSIDERED A KEEP-OUT AREA FOR COMPONENTS.
2. HATCHED AREAS REPRESENT ZONES ON THE PCB THAT COME IN CONTACT WITH OR THE CONNECTOR CAGE. INDICATED AREAS TO BE CONSIDERED TRACE FREE.
3. PIN NUMBERS ARE PER THE STANDARD.
BOTH PORTS ARE IN THE SAME(UP-UP) MOUDULE ORIENTATION.
4. LED KEEP-IN ZONE DEFINES THE PHYSICAL SPACE ALLOWER FOR PLACEMENT OF SMD CHIP STYLE LED PACKAGES INCLUDING SMD MOUNTING PADS. KEEP-IN ZONE EXTENDS VERTICALLY TO 0.8mm ABOVE THE TOP SIDE OF BOARD.

VOOHU 苏州沃虎电子科技有限公司
Su Zhou Voohu Electronic Tech.Co.Ltd

TITLE:
QSFP+ 2X1 ASSMBLY

SIZE
A4
UNITS
MM[INCH]

GENERAL TOLERANCES
UNLESS SPECIFIED

APPROVED BY:
Geoffrey.Song

PART NO.:
WHSFP28221F008

SACLE
1:1

REV
A0

$x \pm 0.35$	$x^\circ \pm 3.0^\circ$
$.x \pm 0.30$	$.x^\circ \pm 2.0^\circ$

CHECKED BY:
Elvis.Song

TEL: +86 400 1048 018

WEB: WWW.WOHU-TEK.COM

REMARK:

SHEET
2/2



$.xx \pm 0.25$	$.xx^\circ \pm 1.5^\circ$
$.xxx \pm 0.10$	$.xxx^\circ \pm 1.0^\circ$

DESIGND BY:
Sunny.Xu