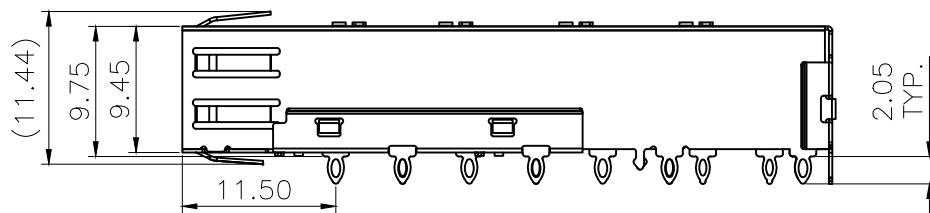
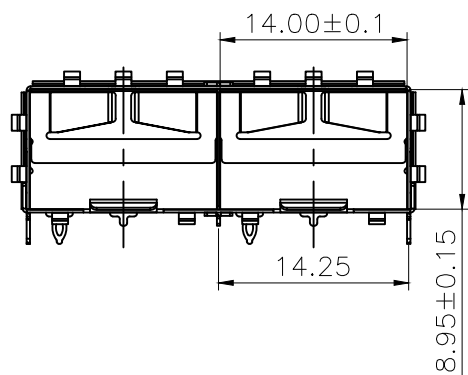
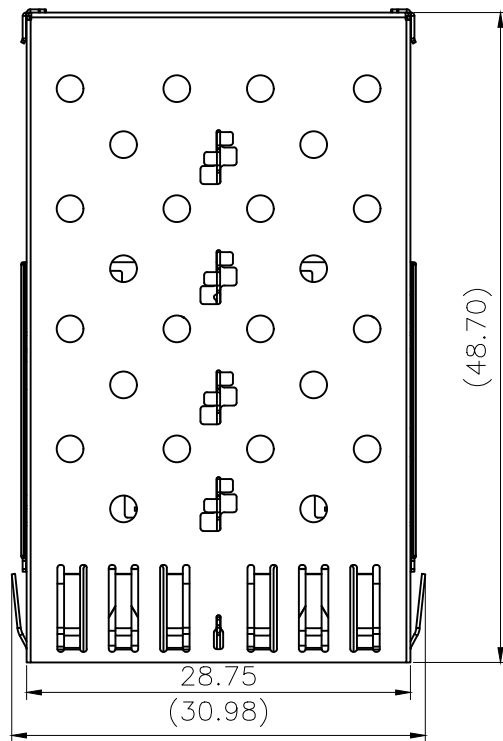


REACH & RoHS
COMPLIANT



NOTES:

- 1.MATERIAL: COPPER ALLOY, NI-PLATED
- 2.PACKAGING: TRAY PACKAGING
- 3.TEMPERATURE RANGE: -55°C TO +105°C

TITLE:

SFP 1X2 CAGE

SIZE

A4

UNITS

MM[INCH]

GENERAL TOLERANCES

UNLESS SPECIFIED

APPROVED BY:

Geoffrey.Song

PART NO.:

WH192R019D0S02

SCALE

1:1

REV

A0

.xx±0.25

.xxx±0.10

.x°±3.0°

.x°±2.0°

CHECKED BY:

Elvis.Song

REMARK:

SHEET

1/4



.xx±0.25

.xxx±0.10

.x°±1.5°

.xxx°±1.0°

DESIGNED BY:

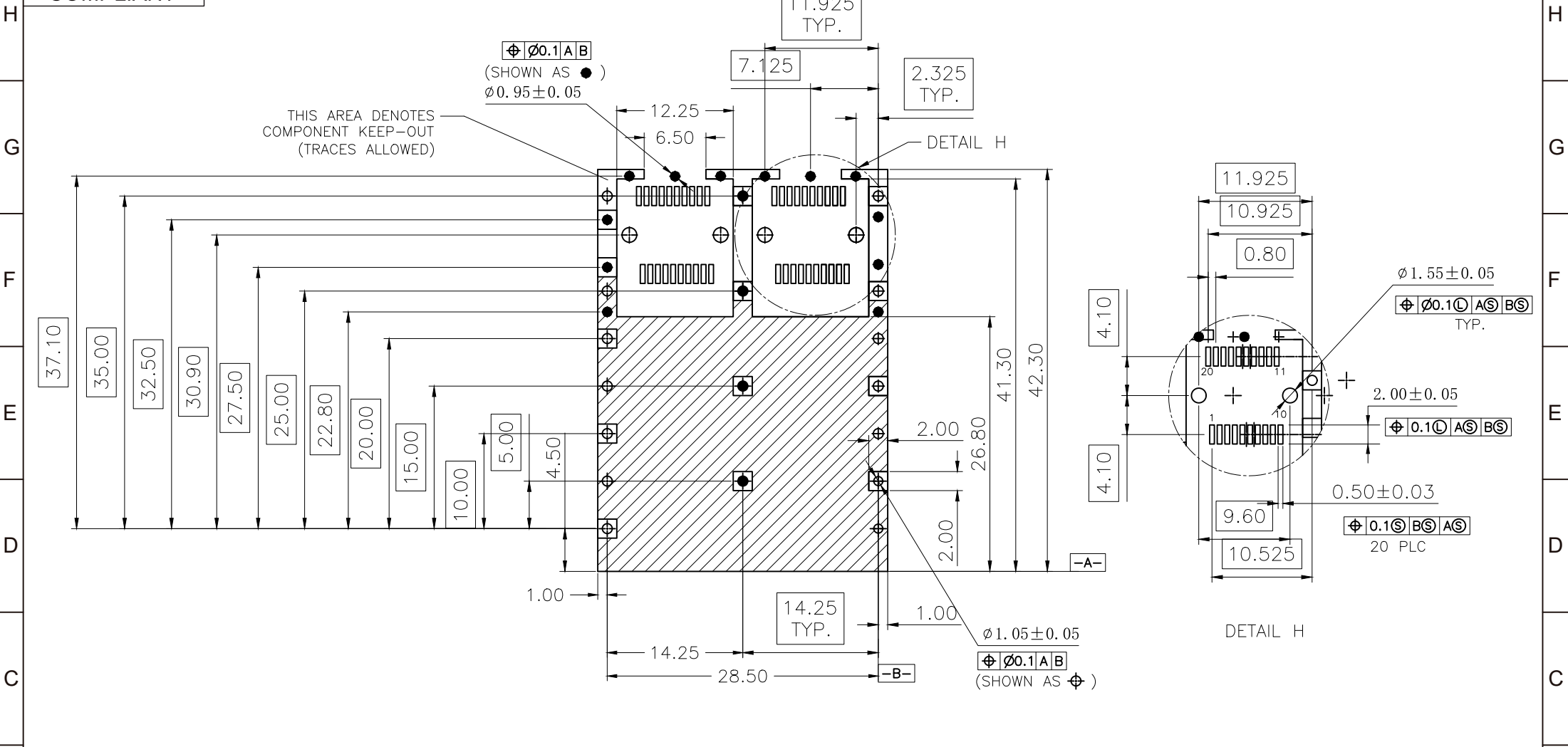
Sunny.Xu

VOOHU 苏州沃虎电子科技有限公司
Su Zhou Voohu Electronic Tech.Co.Ltd

TEL: +86 400 1048 018

WEB: WWW.VOOHU.CN

REACH & RoHS
COMPLIANT



PCB LAYOUT
FOR BELLY TO BELLY SIDE MOUNTING

VOOHU 苏州沃虎电子科技有限公司
Su Zhou Voohu Electronic Tech.Co.Ltd

TITLE:
SFP 1X2 CAGE

SIZE
A4
UNITS
MM[INCH]

GENERAL TOLERANCES
UNLESS SPECIFIED

APPROVED BY:
Geoffrey.Song

PART NO.:
WH192R019D0S02

SCALE
1:1

REV
A0

$x \pm 0.35$
 $.x \pm 0.30$

$x^\circ \pm 3.0^\circ$
 $.x^\circ \pm 2.0^\circ$

CHECKED BY:
Elvis.Song

TEL: +86 400 1048 018

WEB: WWW.VOOHU.CN

REMARK:

SHEET
3/4

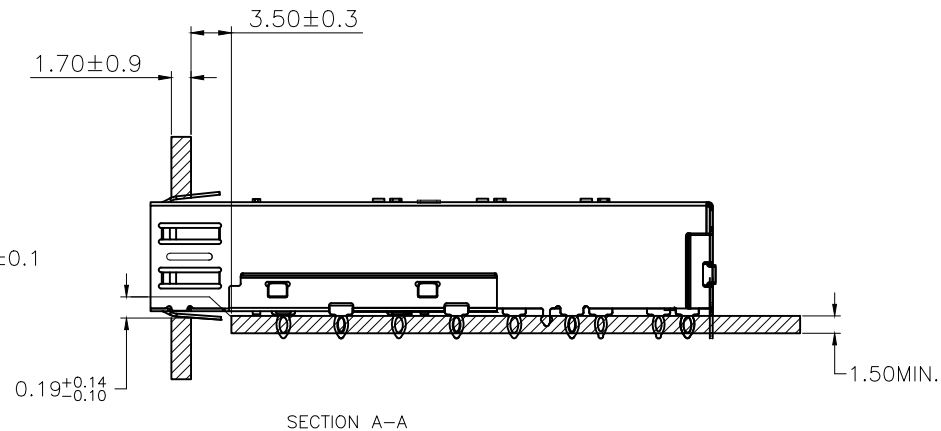
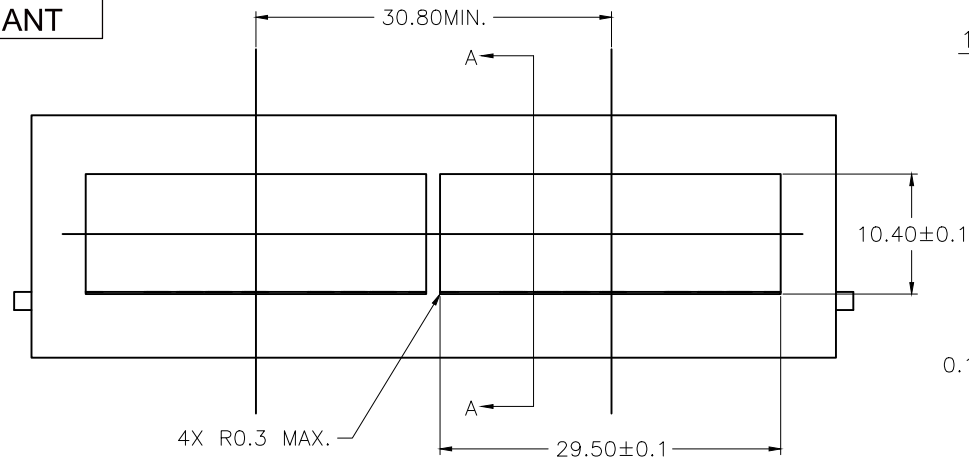


$.xx \pm 0.25$
 $.xxx \pm 0.10$

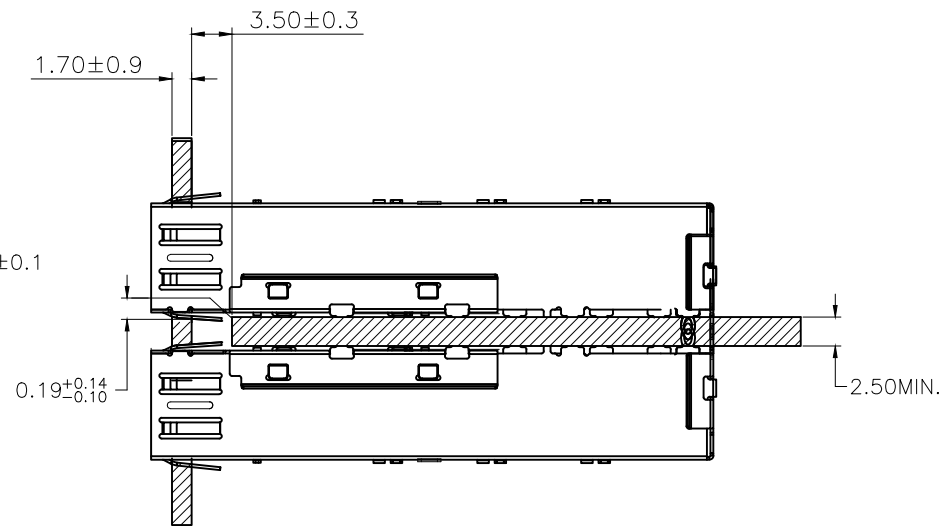
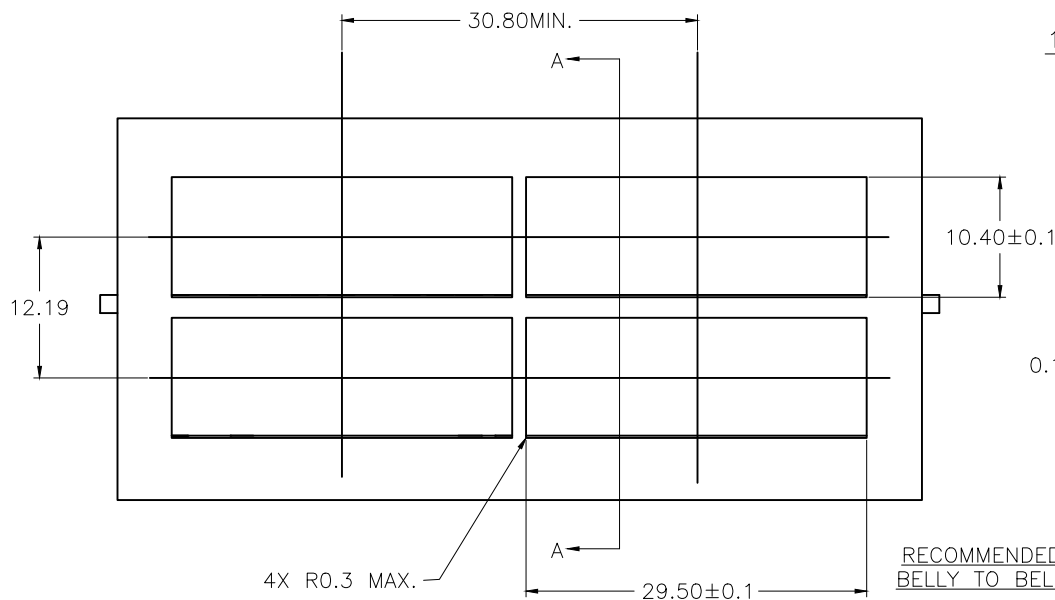
$.xx^\circ \pm 1.5^\circ$
 $.xxx^\circ \pm 1.0^\circ$

DESIGNED BY:
Sunny.Xu

REACH & RoHS
COMPLIANT



RECOMMENDED BEZEL DESIGN
SINGLE SIDED APPLICATIONS



RECOMMENDED BEZEL DESIGN
BELLY TO BELLY APPLICATIONS

VOOHU 苏州沃虎电子科技有限公司
Su Zhou Voohu Electronic Tech.Co.Ltd

TITLE:
SFP 1X2 CAGE

SIZE
A4
UNITS
MM[INCH]

GENERAL TOLERANCES
UNLESS SPECIFIED

APPROVED BY:
Geoffrey.Song

PART NO.:
WH192R019D0S02

SCALE
1:1
REV
A0

$x \pm 0.35$	$x^\circ \pm 3.0^\circ$
$.x \pm 0.30$	$.x^\circ \pm 2.0^\circ$

CHECKED BY:
Elvis.Song

TEL: +86 400 1048 018

WEB: WWW.VOOHU.CN

REMARK:

SHEET
4/4



$.xx \pm 0.25$	$.xx^\circ \pm 1.5^\circ$
$.xxx \pm 0.10$	$.xxx^\circ \pm 1.0^\circ$

DESIGNED BY:
Sunny.Xu