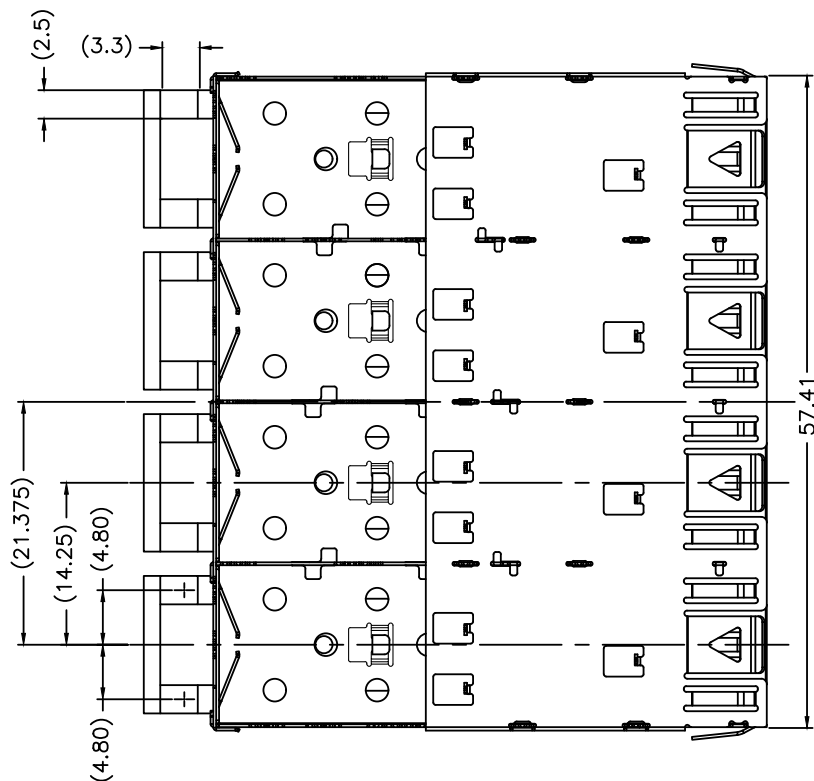
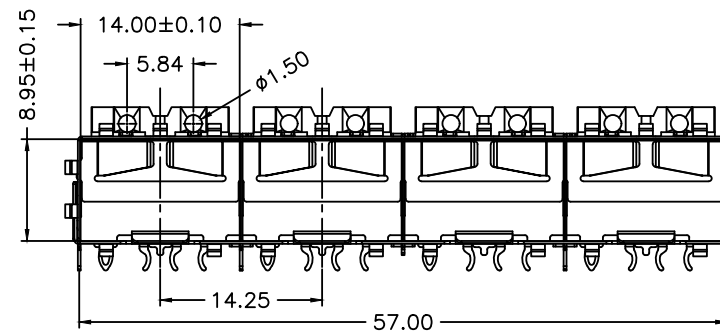
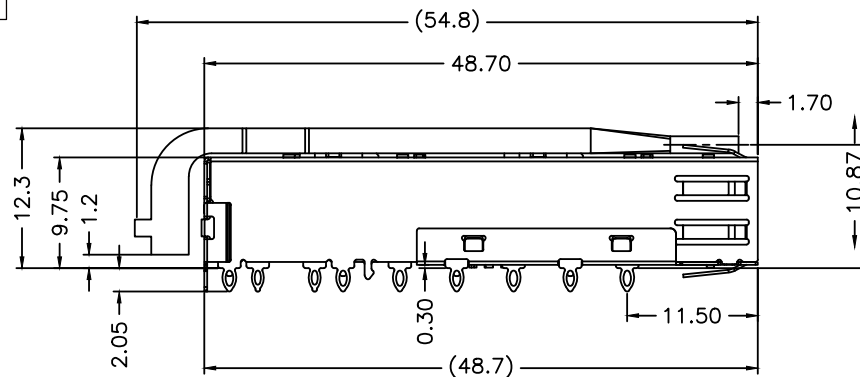


REACH & RoHS
COMPLIANT



NOTES:

1.MATERIAL:

CAGE: COPPER ALLOY,NI PLATING,THICKNESS 0.25mm
MIDDLE CAGE: STAINLESS STEEL
LIGHT PIPE: CLEAR POLYCARBONATE

2.PACKAGING: TRAY PACKAGING

3.TEMPERATURE RANGE:

OPERATING : -40°C TO +85°C
NON OPERATING : -55°C TO +105°C

TITLE:
SFP 1X4 CAGE, W/LIGHT PIPE

SIZE
A4

UNITS
MM[INCH]

GENERAL TOLERANCES
UNLESS SPECIFIED

APPROVED BY:
Geoffrey.Song

PART NO.:
WH194T469D1S02

SCALE
1:1

REV
A0

$x \pm 0.35$ $x^\circ \pm 3.0^\circ$
 $.x \pm 0.30$ $.x^\circ \pm 2.0^\circ$

CHECKED BY:
Elvis.Song

REMARK:

SHEET
1/4



$.xx \pm 0.25$ $.xx^\circ \pm 1.5^\circ$
 $.xxx \pm 0.10$ $.xxx^\circ \pm 1.0^\circ$

DESIGNED BY:
Sunny.Xu

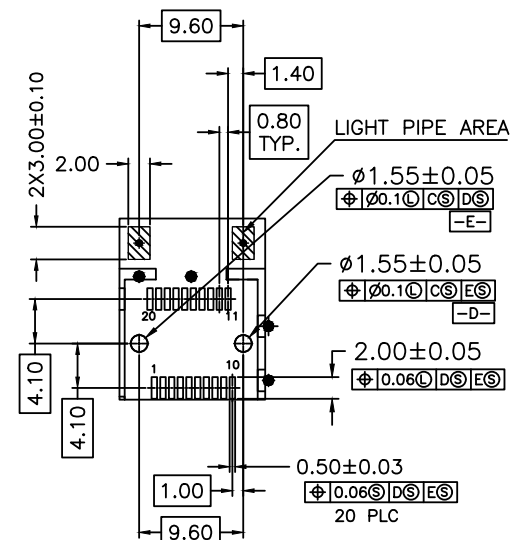
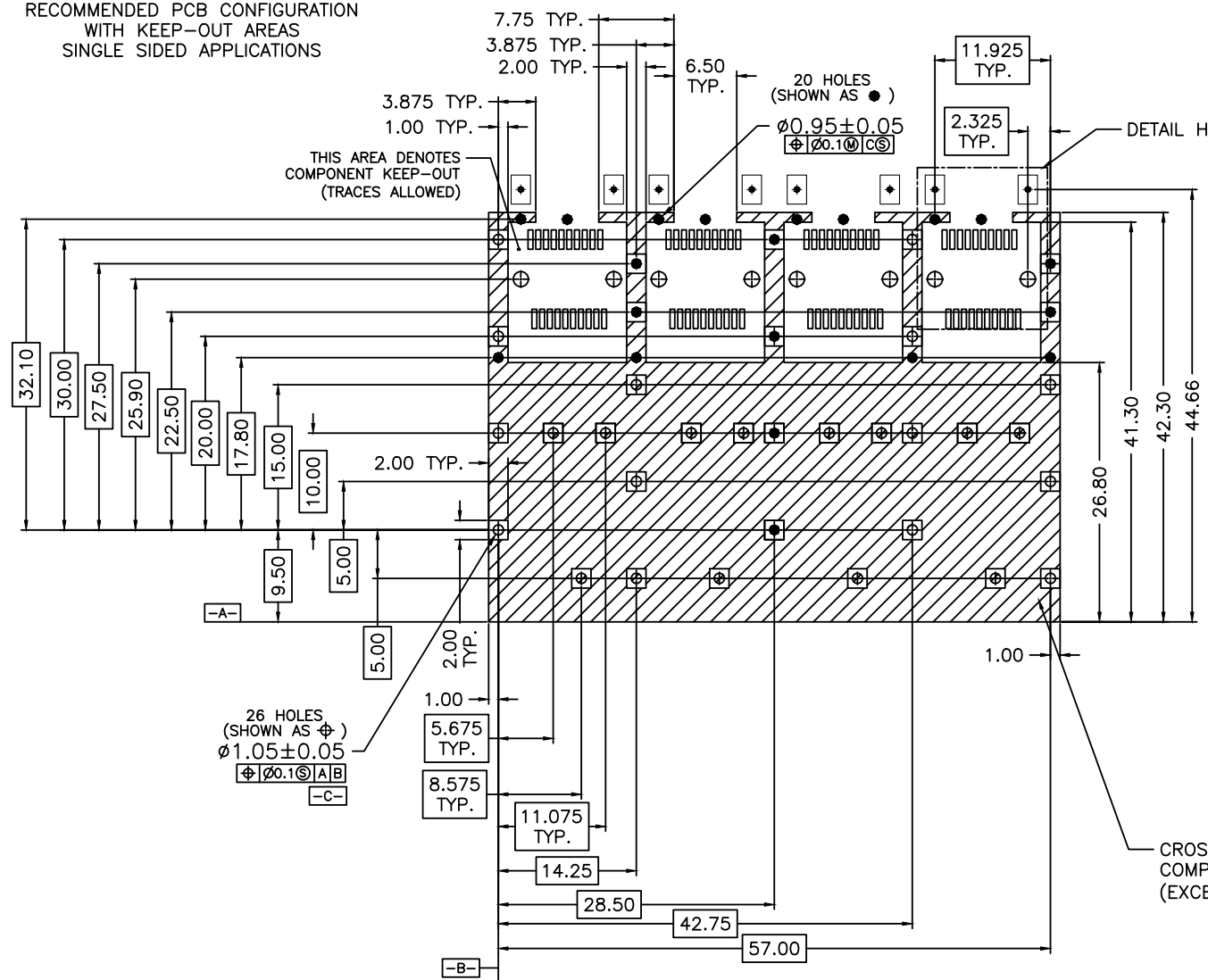
VOOHU 苏州沃虎电子科技有限公司
Su Zhou Voohu Electronic Tech.Co.Ltd

TEL: +86 400 1048 018

WEB: WWW.VOOHU.CN

REACH & RoHS
COMPLIANT

RECOMMENDED PCB CONFIGURATION
WITH KEEP-OUT AREAS
SINGLE SIDED APPLICATIONS



DETAIL H
RECOMMENDED CONNECTOR LAYOUT
4X INDIVIDUALLY

CROSS-HATCHED AREA DENOTES
COMPONENT AND TRACE KEEP-OUT
(EXCEPT CHASSIS GROUND)

TITLE:
SFP 1X4 CAGE, W/LIGHT PIPE

SIZE
A4

UNITS
MM[INCH]

GENERAL TOLERANCES
UNLESS SPECIFIED

APPROVED BY:
Geoffrey.Song

PART NO.:
WH194T469D1S02

SCALE
1:1

REV
A0

$x \pm 0.35$
 $.x \pm 0.30$

CHECKED BY:
Elvis.Song

REMARK:

SHEET
2/4



$.xx \pm 0.25$
 $.xxx \pm 0.10$

DESIGNED BY:
Sunny.Xu

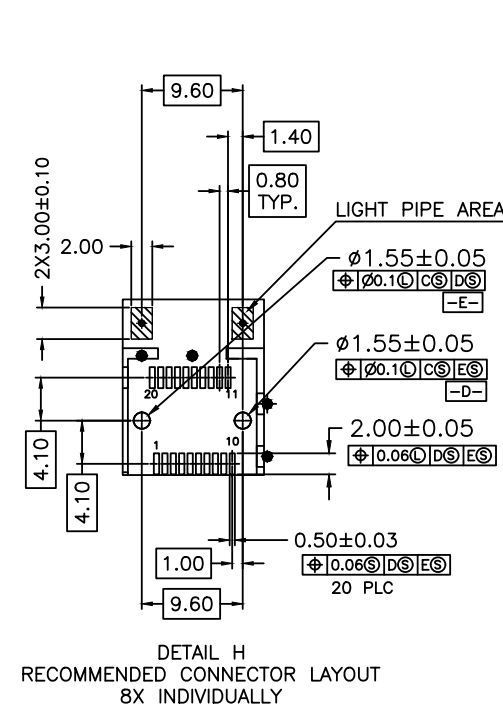
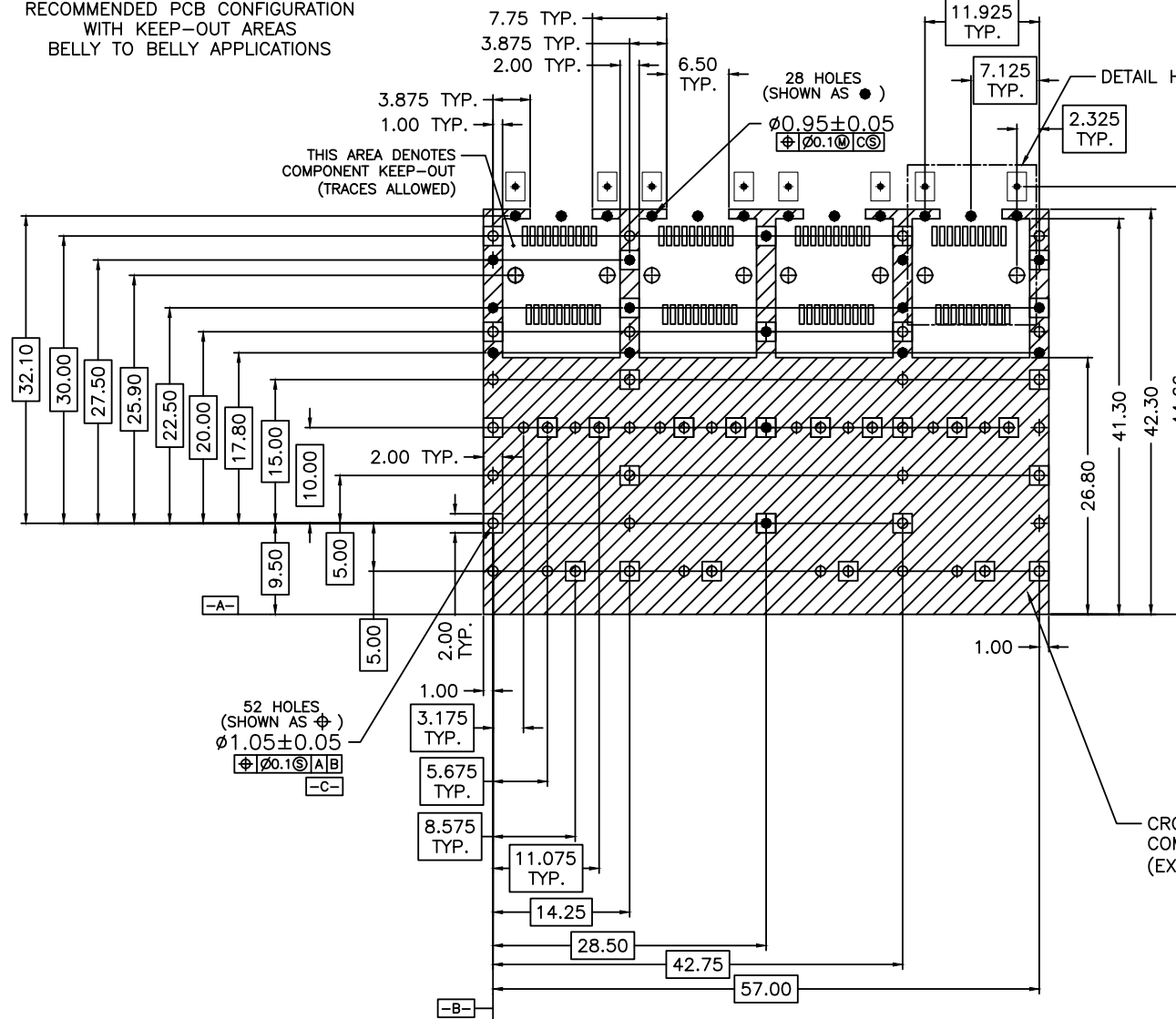
VOOHU 苏州沃虎电子科技有限公司
Su Zhou Voohu Electronic Tech.Co.Ltd

TEL: +86 400 1048 018

WEB: WWW.VOOHU.CN

REACH & RoHS
COMPLIANT

RECOMMENDED PCB CONFIGURATION
WITH KEEP-OUT AREAS
BELLY TO BELLY APPLICATIONS



CROSS-HATCHED AREA DENOTES
COMPONENT AND TRACE KEEP-OUT
(EXCEPT CHASSIS GROUND)

VOOHU 苏州沃虎电子科技有限公司
Su Zhou Voohu Electronic Tech.Co.Ltd

TITLE:
SFP 1X4 CAGE, W/LIGHT PIPE

SIZE
A4
UNITS
MM[INCH]

GENERAL TOLERANCES
UNLESS SPECIFIED

APPROVED BY:
Geoffrey.Song

PART NO.:
WH194T469D1S02

SCALE
1:1
REV
A0

$x \pm 0.35$
 $x^\circ \pm 3.0^\circ$
 $.x \pm 0.30$
 $.x^\circ \pm 2.0^\circ$

CHECKED BY:
Elvis.Song

TEL: +86 400 1048 018

WEB: WWW.VOOHU.CN

REMARK:

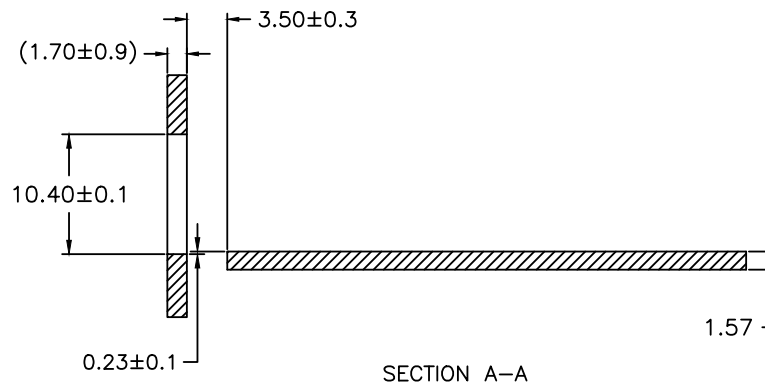
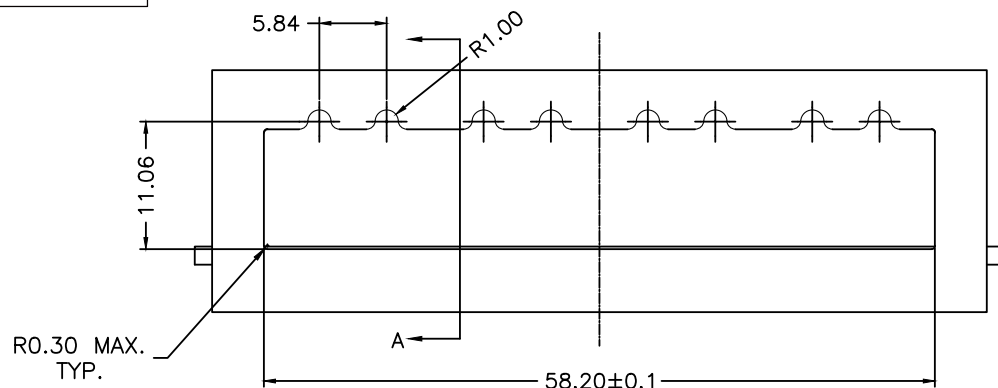
SHEET
3/4



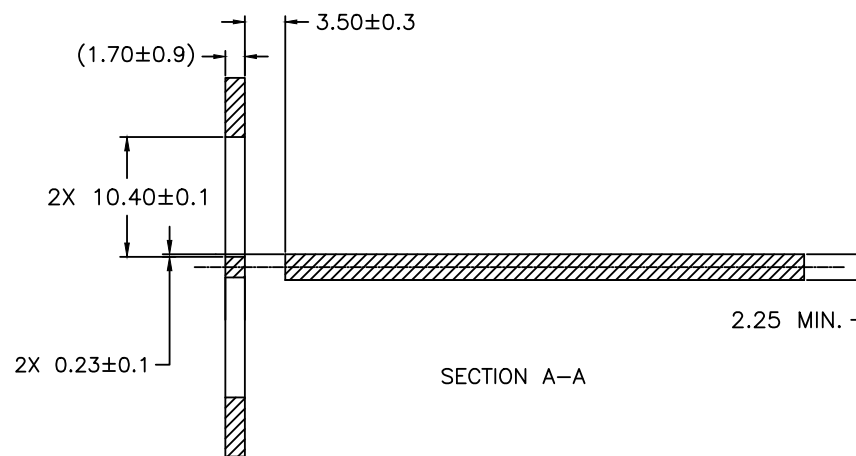
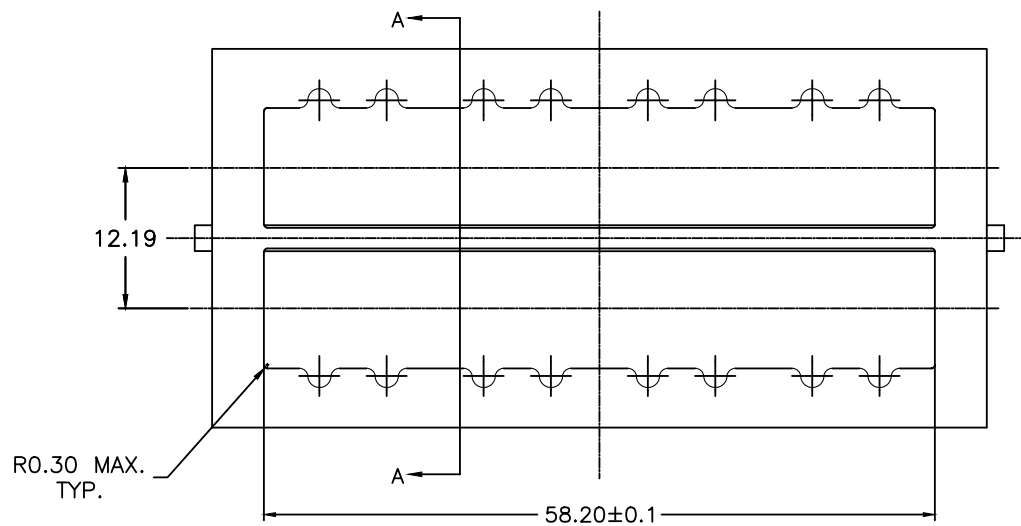
$.xx \pm 0.25$
 $.xx^\circ \pm 1.5^\circ$
 $.xxx \pm 0.10$
 $.xxx^\circ \pm 1.0^\circ$

DESIGNED BY:
Sunny.Xu

REACH & RoHS
COMPLIANT



RECOMMENDED BEZEL DESIGN
SINGLE SIDED APPLICATIONS



RECOMMENDED BEZEL DESIGN
BELLY TO BELLY APPLICATIONS

VOOHU 苏州沃虎电子科技有限公司
Su Zhou Voohu Electronic Tech.Co.Ltd

TITLE:
SFP 1X4 CAGE, W/LIGHT PIPE

SIZE
A4

UNITS
MM[INCH]

GENERAL TOLERANCES
UNLESS SPECIFIED

APPROVED BY:
Geoffrey.Song

PART NO.:
WH194T469D1S02

SCALE
1:1

REV
A0

.x±0.35
.x±0.30

.x°±3.0°
.x°±2.0°

CHECKED BY:
Elvis.Song

TEL: +86 400 1048 018

WEB: WWW.VOOHU.CN

REMARK:

SHEET
4/4



.xx±0.25
.xxx±0.10

.xx°±1.5°
.xxx°±1.0°

DESIGNED BY:
Sunny.Xu