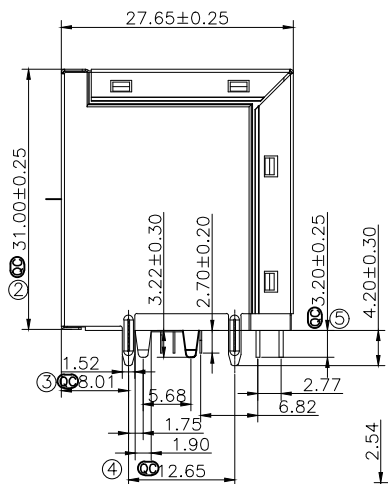
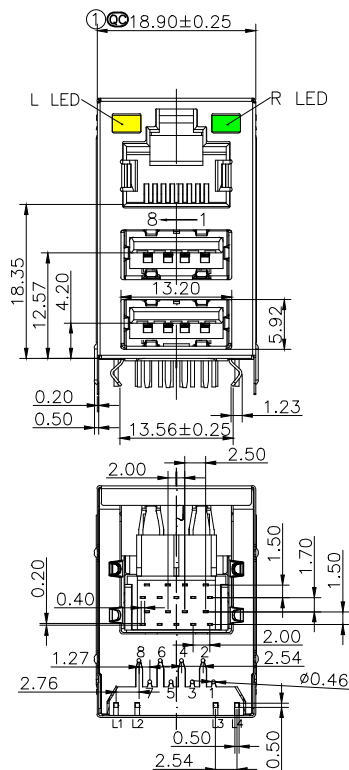
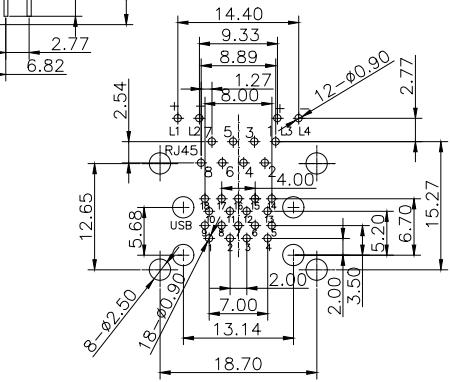
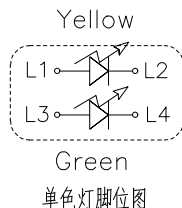


REACH & RoHS
COMPLIANT

MECHANIC SPECIFICATIONS:



| 1000 BASE TX | | |
|--------------|-------------|--|
| Pin Number | Signal Name | |
| 1 | TX1+ | |
| 2 | TX1- | |
| 3 | RX1+ | |
| 4 | TX2+ | |
| 5 | TX2- | |
| 6 | RX1- | |
| 7 | RX2+ | |
| 8 | RX2- | |



P.C.B RECOMMENDED HOLE LAYOUT SEEN FROM COMPONENT SIDE.
ALL CENTERLINE DIMENSIONS ARE BASIC

NOTES:

ELECTRICAL:

- VOLTAGE RATING : 125 VAC RMS.
- CURRENT RATING : 1.5 AMP.
- CONTACT RESISTANCE : 50 MILLIOHMS MAX.
- INSULATION RESISTANCE: 1000 MEGOHMS MIN @ 500 VDC.
- DIELECTRIC STRENGTH : 1000 VAC RMS 50Hz, 1MIN.
- LED RATINGS : FORWARD VOLTAGE: 2.2 VOLTS TYPICAL.
REVERSE VOLTAGE: 5 VOLTS MAXIMUM.

MECHANICAL:

- HOUSING MATERIAL : THERMOPLASTIC UL94V-0.
- CONTACT MATERIAL : PHOSPHOR BRONZE ∅0.46mm.
- PLATING : GOLD PLATING OVER NICKEL.
- SHIELD: COPPER ALLOY(C2680) OR SUS . 0.20mm THICKNESS PLATING NI.
- LED:OPTION
- OPERATING LIFE : 750 CYCLES MIN.
- PCB RETENTION PRE-SOLDER : 1 LB MIN.
- PCB RETENTION POST-SOLDER: 10 LBS MIN.

ENVIRONMENTAL:

- STORAGE : -40°C TO +85°C.
 - OPERATION : -40°C TO +85°C.
 - WAVE SOLDERING TEMPERRATURE: 255~265° (5~10SECONDS).
 - ROHS COMPLIANT
- MATES WITH MODULAR PLUG CONFORMING TO FCC PART 68, SUBPART F.

USB SPECIFICATIONS:

1.ELECTRICAL CHARACTERISTICS:

- CONTACT CURRENT RATING:1.5 AMPERS.
- CONTACT VOLTAGE RATING: 30 VDC.
- CONTACT RESISTANCE : 30 mOHMS MAX.
- DIELECTRIC WITHSTANDING VOLTAGE:500 VAC AT Sea Level.
- INSULATION RESISTANCE:1000 MOHMS MIN @500 VDC.

2.MECHANICAL CHARCTERISTICS:

- CONTACT MATING FORCE:35N(3.57kg) MAX.
- CONNECTOR UNMATING FORCE :10N(1.02kg) MIN.
- TERMINAL RETENION FORCE :9.8N(1kg) MIN.
- DURABILITY:1500 CYCLES.
- OPERATING TEMPERATURE:-40°C TO +85°C.

3.MATERIAL:

- HOUSING MATERIAL: PBT WHITE/BLACK(UL94V-0)
- CONTACT MATERIAL: COPPER ALLOY(H62)PLATED GOLD IN MATING AREA;TIN ON SOLDER TALLS.
- SHELL: COPPER ALLOY /SPCC. PLATING NI.

| PRINCIPAL | PROJECT | SEQUENCE NUMBER |
|-----------|------------|-----------------|
| IQC | DIMENSION | ① ② ③ ④ ⑤ |
| IPQC | INSPECTION | ③ ④ ⑤ |

VOOHU 苏州沃虎电子科技有限公司
Su Zhou Voohu Electronic Tech.Co.Ltd

TEL: +86 400 1048 018

WEB: WWW.VOOHU.CN

TITLE: RJ45+USB 3.0 弯角
JACK (18.9带灯无弹&分体式)

PART NO.:
WH8201078832101

REMARK:

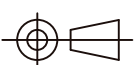
SIZE
A4

SCALE
1:1

SHEET
1/1

UNITS
MM[INCH]

REV
A0



GENERAL TOLERANCES
UNLESS SPECIFIED

| | |
|-----------|------------|
| x±0.35 | x°±3.0° |
| .x±0.30 | .x°±2.0° |
| .xx±0.25 | .xx°±1.5° |
| .xxx±0.10 | .xxx°±1.0° |

APPROVED BY:
Geoffrey.Song

CHECKED BY:
Elvis.Song

DESIGNED BY:
Sunny.Xu