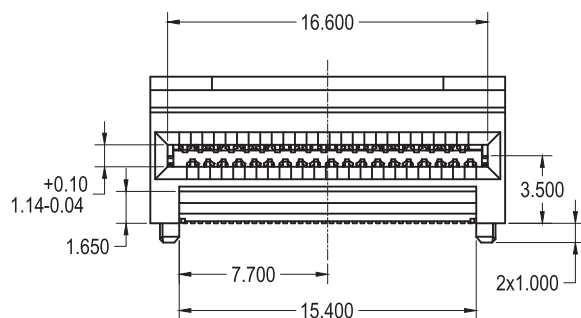
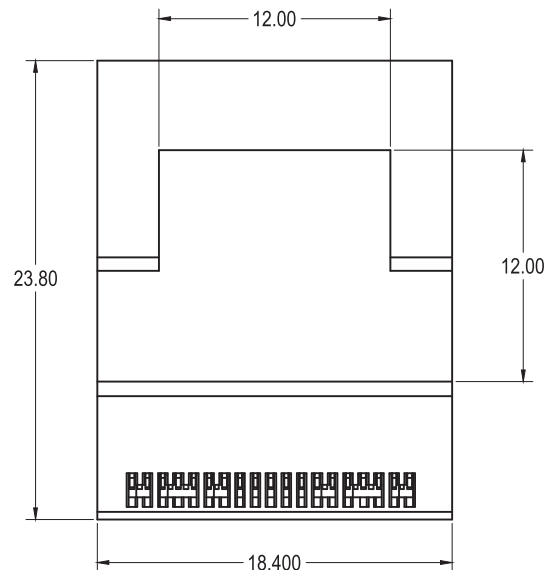
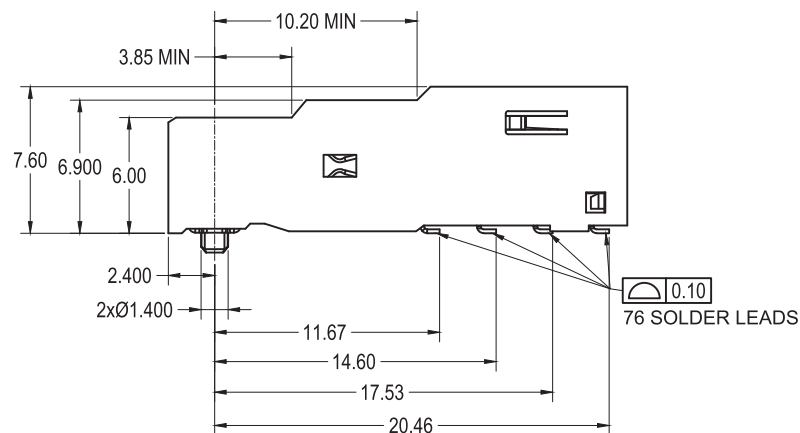
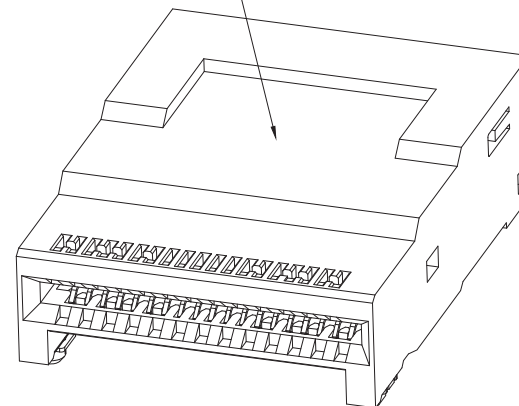


REACH & RoHS
COMPLIANT



NOTES:
 1.MATERIAL:
 HOUSING: LCP UL94V-0,BLACK
 INSERT MOLDING: LCP UL94V-0,BLACK
 CONTACT: COPPER ALLOY
 2.OPERATING TEMPERATURE: -40 °C to +85°C
 3.PLATING: 15u"Au ON CONTACT AREA, 80u" MATTE TIN ON TAIL AREA

PICK & PLACE ZONE



VOOHU 苏州沃虎电子科技有限公司
Su Zhou Voohu Electronic Tech.Co.Ltd

TITLE:
QSFP-DD 56 CONNECTOR

SIZE
A4
UNITS
MM[INCH]

GENERAL TOLERANCES
UNLESS SPECIFIED

APPROVED BY:
Geoffrey.Song

PART NO.:
WH690M019DOS01

SCALE
1:1
REV
A0

$x \pm 0.35$ $x^\circ \pm 3.0^\circ$
 $.x \pm 0.30$ $.x^\circ \pm 2.0^\circ$

CHECKED BY:
Elvis.Song

TEL: +86 400 1048 018

WEB: WWW.VOOHU.CN

REMARK:

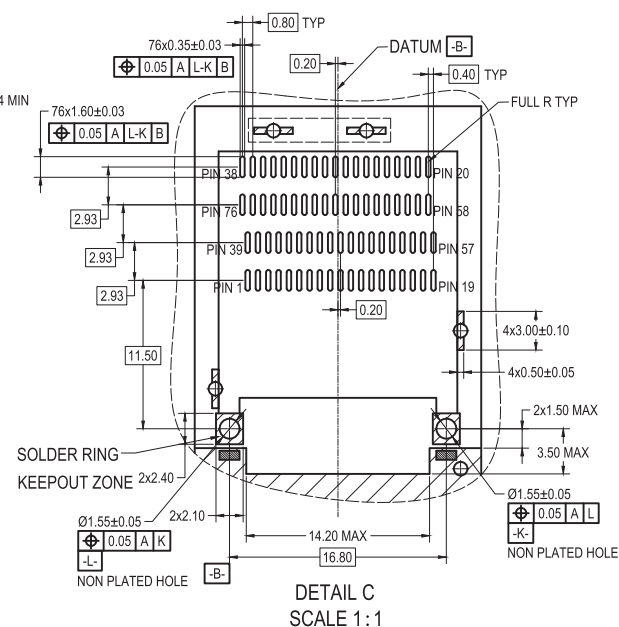
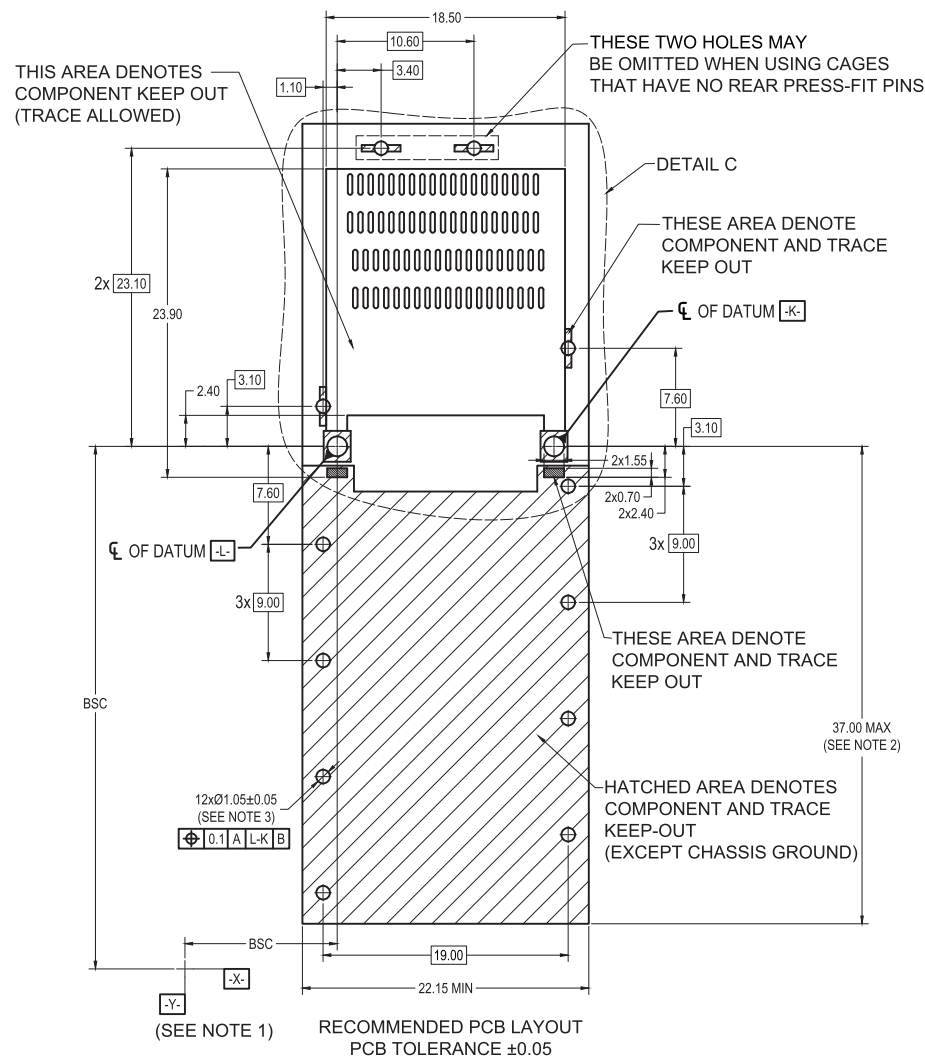
SHEET
1/2



$.xx \pm 0.25$ $.xx^\circ \pm 1.5^\circ$
 $.xxx \pm 0.10$ $.xxx^\circ \pm 1.0^\circ$

DESIGNED BY:
Sunny.Xu

REACH & RoHS
COMPLIANT



1. DATUMS X AND Y ESTABLISHED BY CUSTOMER IS FUDICIAL.
2. LOCATION OF EDGE OF PCB IS APPLICATION SPECIFIC.
3. FINISHED HOLE SIZE.

TITLE:
QSFP-DD 56 CONNECTOR

SIZE
A4
UNITS
MM[INCH]

GENERAL TOLERANCES
UNLESS SPECIFIED

APPROVED BY:
Geoffrey.Song

PART NO.:
WH690M019DOS01

SCALE
1:1
REV
A0

$x \pm 0.35$
 $.x \pm 0.30$

CHECKED BY:
Elvis.Song

REMARK:

SHEET
2/2



$.xx \pm 0.25$
 $.xxx \pm 0.10$

DESIGNED BY:
Sunny.Xu

VOOHU 苏州沃虎电子科技有限公司
Su Zhou Voohu Electronic Tech.Co.Ltd

TEL: +86 400 1048 018

WEB: WWW.VOOHU.CN