

Specification for Approval

产品承认书

Customer:

Customer P/N:

VOOHU P/N:

Version No.:

Description:

WHDQ96504P2

V0.1

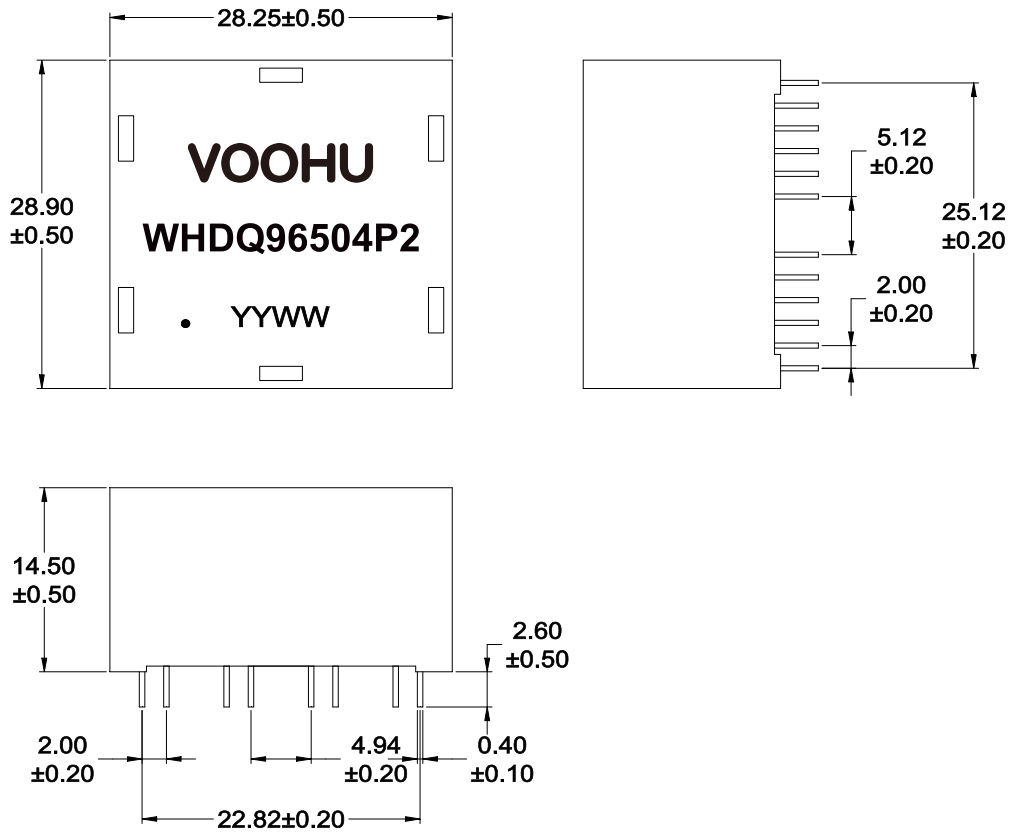
2.5/5G BASE-T

Laser Marking

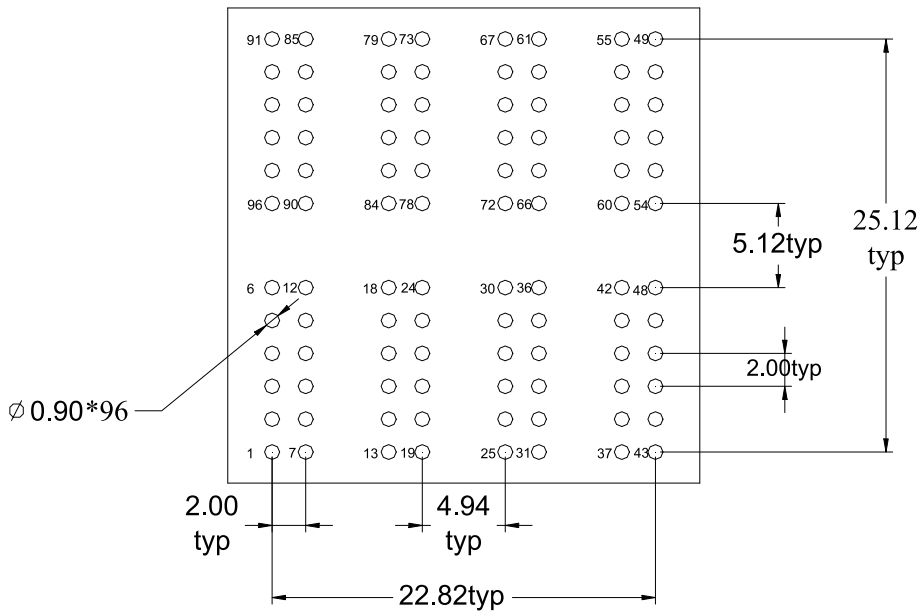
SUZHOU VOOHU Company Approval		Customer Approval (客户承认签章)
DRAWN	Geoffrey.Song	
CHECKED	Sunny.Xu	
APPROVED	Elvis. Song	
日期DATE:2026/5/07		日期DATE: 2026/5/07

Please Return One Copy to Us After Approved,TKs! (承认后请回寄一份,谢谢)

A. MECHANICAL(unit:mm)

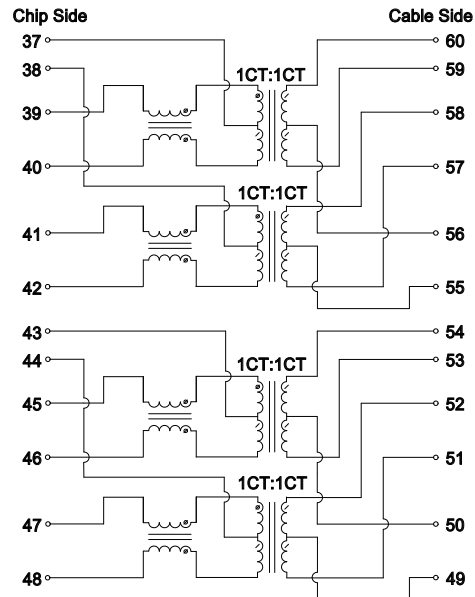
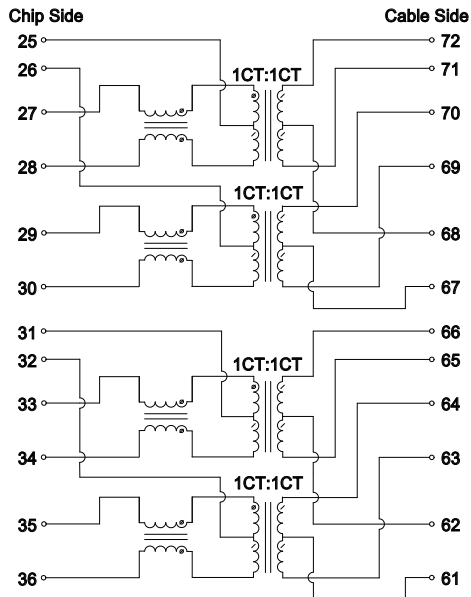
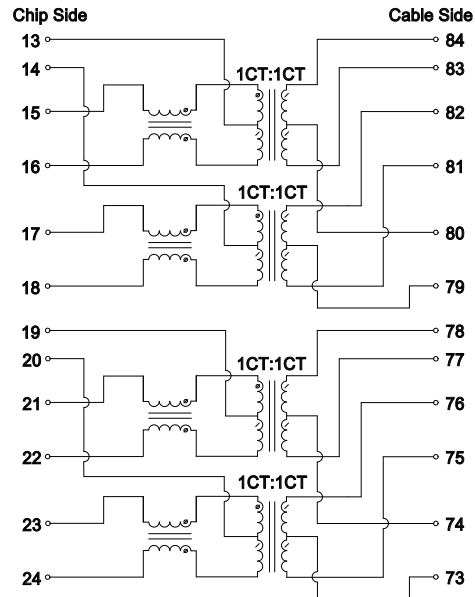
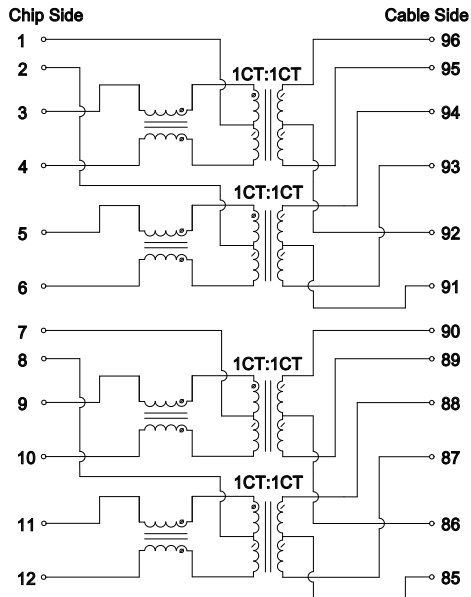


B. PCB Layout mounting Hole(Top View)



DESCRIPTION	PART NO.	REV:R0
2.5/5G BASE-T	WHDQ96504P2	PAGE:2/5

C.SCHEMATICS



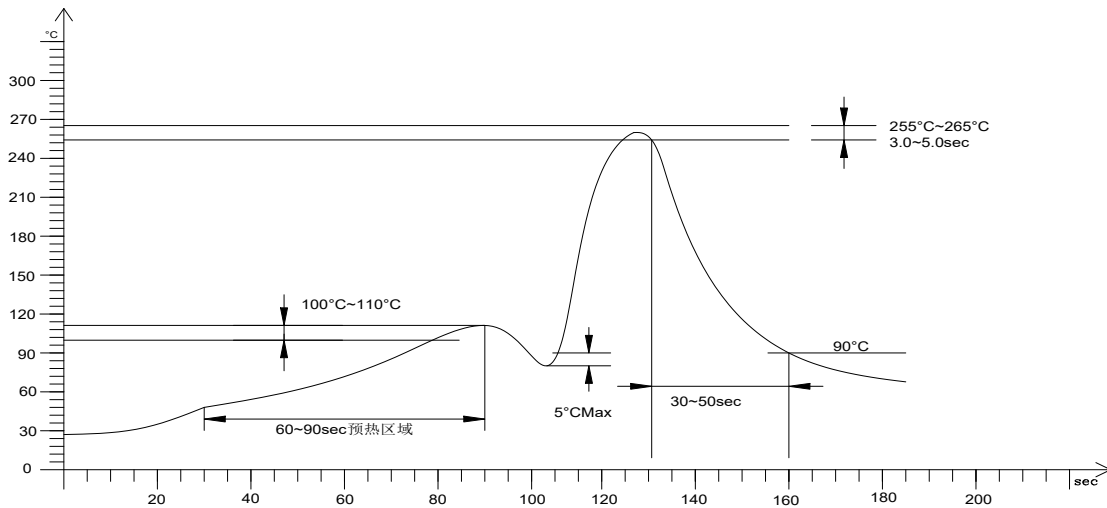
DESCRIPTION	PART NO.	REV:R0
2.5/5G BASE-T	WHDQ96504P2	PAGE:3/5

D. ELECTRICAL SPECIFICATIONS @25°C

Unless Otherwise Specified, Testing is Performed at 25°C ± 5°C

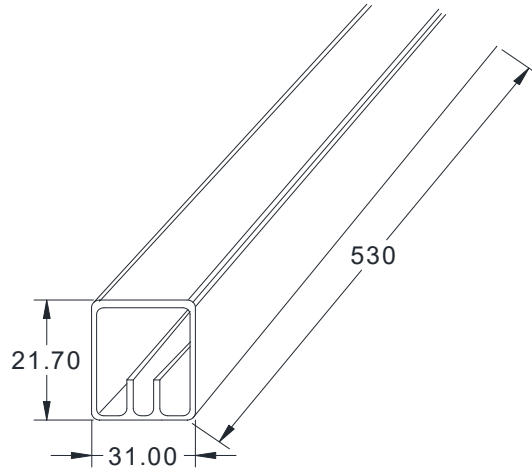
1. OCL: 150uH Min @ 100KHz 0.1V with 21mA DC BIAS
2. Leakage Inductance: 0.5uH Max @ 100KHz, 0.1V
3. DCR: 1000mΩ Max
4. Turns Ratio: 1CT:1CT±5%
5. Insertion Loss: -1.0 dB Max @ 1-100 MHz
-2.0 dB Max @ 100-150 MHz
6. Return Loss: -16 dB Min @ $1 \leq f \leq 40$ MHz
-16+10log(f/40) dB Min @ $40 < f \leq 150$ MHz, where f is in MHz
7. Cross Talk: -30 dB Typ @ 1-250 MHz
8. Common Mode Rejection Ratio: -30 dB Typ @ 1-250 MHz
9. Isolation Hipot: 1500VAC 1mA 60S
10. Operating temperature 0°C to +70°C
11. Storage temperature -40°C to +85°C
12. PoE Support 90W: Each channel support 900mA DC balance current,
Full channels support 1800mA DC balance current.

E. RECOMMEND WAVE SOLDERING CURVE

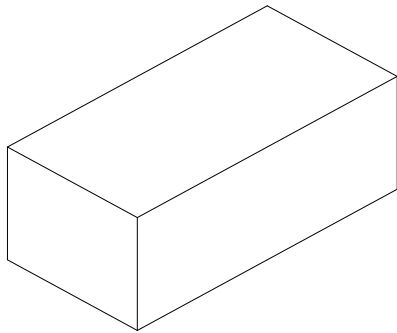


DESCRIPTION	PART NO.	REV:R0
2.5/5G BASE-T	WHDQ96504P2	PAGE:4/5

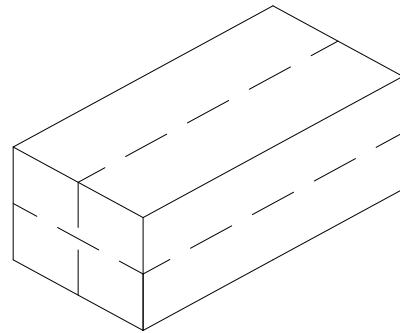
F. Packaging specification



Tube: 530*31.00*21.70mm



Inner Carton: L555*W165*H100mm



Export Carton: L570*W370*H240mm

Package Quantity:

One Tube=17Pcs

One Inner Carton=17*20=340Pcs

One Export Carton=340*4=1360Pcs

DESCRIPTION	PART NO.	REV:R0
2.5/5G BASE-T	WHDQ96504P2	PAGE:5/5