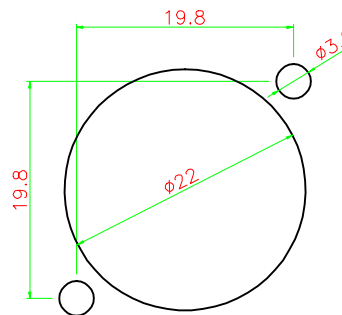
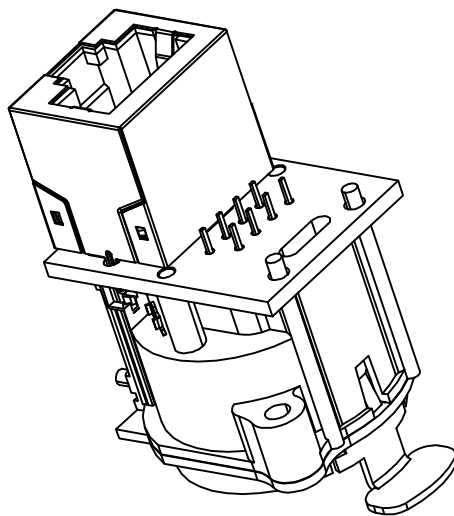
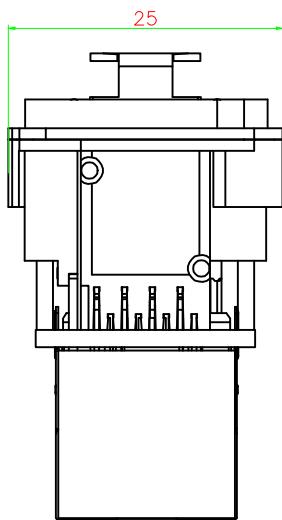
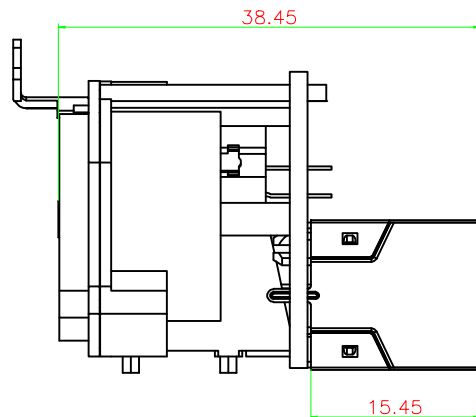
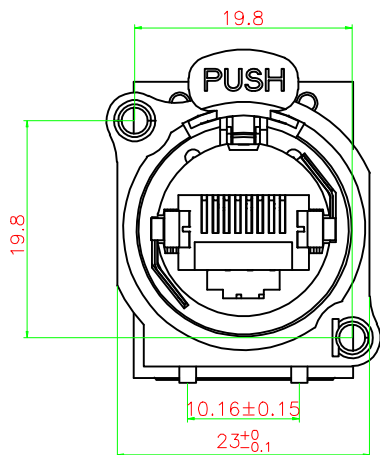


REACH & RoHS
COMPLIANT



Frontplattenausschnitt (Rueckseite)
Panel cut out (rear side)

Electrical
 Contact Resistance: <math><10\text{m}\Omega</math>
 Insulation strength: 1 kvdc
 Frequency range: 1-100 MHz
 Insulation resistance: >0.5 G Ω
 Single contact rated current: 1.5A
 rated voltage: <math><50\text{ V}</math>
 Transmission performance: Class D
 Meet the criteria: TIA/EIA 568B IRC11801

Mechanical
 Insertion force: $\leq 20\text{ N}$
 Pull out the force: $\leq 20\text{ N}$
 Service life: > 1000 pluggings
 Panel thickness: Max. 3mm 0.12
 Wiring: vertical PCB installation
 Locking device: Latch Lock
 Installation direction: rear installation
 Base Shape: A
 Mounting: A-Screw

Material
 Plating of contacts: 0.2 μm Au over Ni plating
 Contact: bronze (Cu58)
 Inner core: PBTP 15% GR
 The shell: PBTP 15% GR

Environmental
 Flammability: UL 94 V-0
 Solderability: comply with IEC 68-2-20
 Operating temperature: -30°C to 80°C

9	屏蔽	H62	1	NI	
8	弹片	锰铜	1	NI	
7	接插	不锈钢	1	NI	
6	左弹片	H62	1	MI	
5	右弹片	H62	1	MI	
4	排针	PHOSPHOR BRONZE	8	1U"	
3	后盖	LCP	1	BLACK	
2	金属面板	锌合金	1	镍	
1	塑座	PA66	1	BLACK	
序号	名称	材料	数量	镀层/颜色	备注

TITLE:
180° 直通内芯

SIZE
A4
UNITS
MM[INCH]

GENERAL TOLERANCES
UNLESS SPECIFIED

APPROVED BY:

PART NO.:
WHKNZ198Z80006W71A200

SCALE
1:1
REV
A0

$x\pm 0.35$
 $x\pm 0.30$

Geoffrey.Song

CHECKED BY:

REMARK:

SHEET
1/1



$.xx\pm 0.25$
 $.xxx\pm 0.10$

DESIGNED BY:

Sunny.Xu

VOOHU 苏州沃虎电子科技有限公司
Su Zhou Voohu Electronic Tech.Co.Ltd

TEL: +86 400 1048 018

WEB: WWW.VOOHU.CN